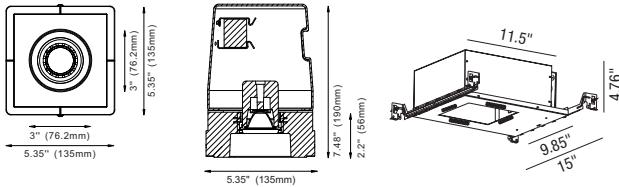


LG-9003-AC

3" Nonadjustable Recessed Downlight LED



Trim

Narrow Housing

Shallow Housing

Project Information:	Project Name:
Fixture Type:	Location:

HARMONY

Plaster Recessed Downlight LED - Round

Harmony downlights are solid plaster lighting solutions made from gypsum, an abundant and stable mineral found in the Earth's crust. Plaster gives you a seamless and trimless lighting application. Our innovative downlight is virtually maintenance free because its monolithic installation eliminates the need for touch ups after servicing. This light fixture does not need a mud-in ring on top of drywall, saving on materials and installation time. Our flangeless downlights are paintable and manufactured at the highest possible level 5 plaster finish.

LED lighting engine is high performance, low power that provides outstanding reliability and color quality/consistency. 2700K, 3000K, 3500K, and 4000K color temperatures are available with 95 CRI. Also available in Warm dim & Tunable white.

- Life Rated for 40,000 hours at 70% lumen maintenance



Quick Info

Application New Construction / Remodeling		
Delivered Lumens 950 lm (9W) / 1250 lm (13W)		Color Quality 95 CRI, 2-step SDCM
Color Temperature 2700K 3000K 3500K 4000K	Warm Dim Option 1800K-3000K 940 lm (13W)	Light Distribution General Wall Wash
Tunable White Option 2700K-6500K 910 lm (13W)		
Input Voltage 120/277V		Dimming TRIAC/ ELV
Trims Gypsum Flangeless (seamless)		
Housing Ratings IC Rated / Air Tight / CCEA		Module Ratings <input checked="" type="checkbox"/> Wet Location
Guarantee 40,000 hrs 3 years		Additional Dimming Options 0-10 / Lutron EcoSystem DALI Dimming (Remote)

LG-9003-AC

3" Nonadjustable
Recessed Downlight LED

Project Information:	Project Name:
Fixture Type:	Location:

Ordering Guide

PRODUCT CODE

LG - 9003 AC

HOUSING

- N - Narrow (LG-1001)
- S - Shallow (LG-1004)

LED OPTIONS

OUTPUT

- CL2-9MR - 950 LUM (9W) (STANDARD)
- CL2-13MR - 1250 LUM (13W)

COLOR TEMPERATURE

- 27K - 2700K
- 30K - 3000K
- 35K - 3500K
- 40K - 4000K

OR

WARM DIM

- CL2 - 13WD - 1800K -3000K 940 LUM (13W)

TUNABLE WHITE

- CL2 - 13TW - 2700K-6500K 910 LUM (13W)

CRI

- 95 - 95 CRI

BEAM SPREAD

- 15 °
- 24 °
- 38 ° (STANDARD)
- 60 °

LENS OPTICAL

- HBL - Honeycomb
- SF - Soft Focus
- FR - Frosted
- LS - Linear Spread
- PR - Prismatic

LENS HOLDER

- FL - Flat (STANDARD)

DIMMING OPTION

- T - Triac/ELV (STANDARD)
- D - DALI (remote driver)
- ECO - (Hi - lume Premier 0.1% Eco System LED Driver with Soft-on, Fade-to-black dimming technology)
- 0 - 10

Example Number

LG-9003 AC N CL2-9W 30K 95 38 SF FL T

Order Number

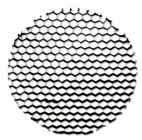
LG-9003 AC - _____ FL _____

LG-9003-AC

3" Nonadjustable
Recessed Downlight LED

Project Information:	Project Name:
Fixture Type:	Location:

ACCESSORIES



Honeycomb Black



Frosted



Flat (WH/BL)



24° Light Beam



Soft Focus



Linear Spread



60° Light Beam

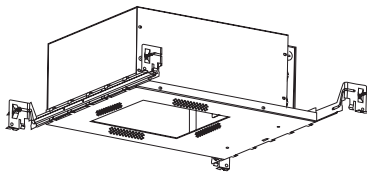
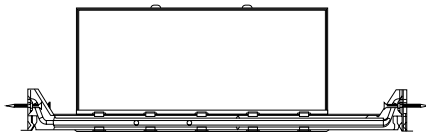
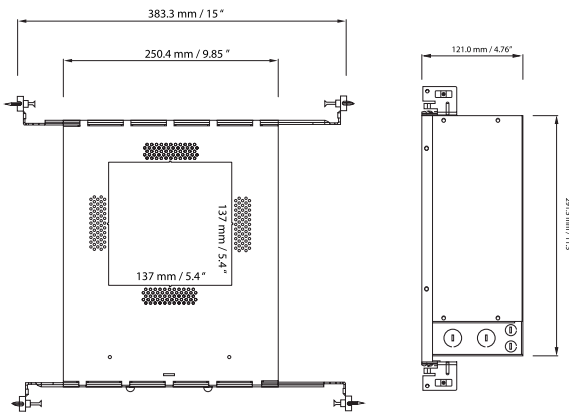
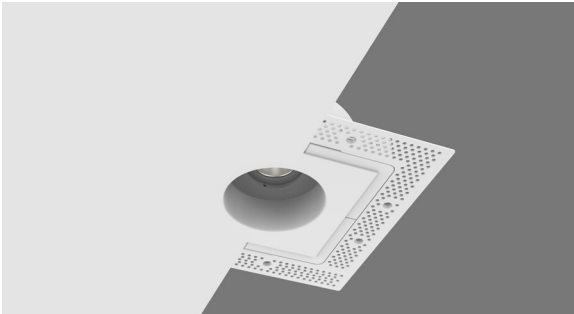


Prismatic

LG -1004

Universal Housing
Shallow

HOUSING



Project Information:	Project Name:
Fixture Type:	Location:

INPUT 120/277V

HOUSING RATING - UL, cUL, IC-rated, Air tight
CCEA (Chicago Platinum)

DRIVER - In the junction box

- TRIAC/ELV less than 1% standard
- 0-10
- Lutron Hi-lume Premier 0.1% Eco System LED Driver with soft-on, fade-to-black dimming technology
- DALI (Remote)

MOUNTING - Shallow housing includes universal mounting brackets and hanger bars

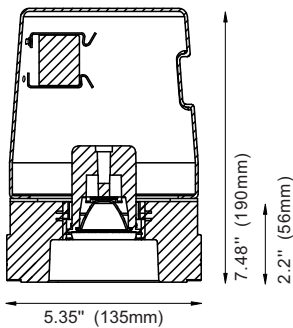
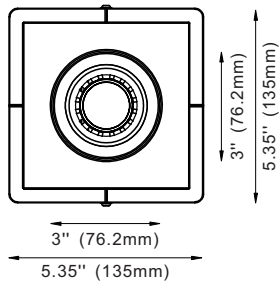
CEILING INSTALLATION



LG-1001

Universal Housing
Narrow

HOUSING



Project Information:	Project Name:
Fixture Type:	Location:

INPUT 120/277V

HOUSING RATING - UL, cUL, IC rated, Air tight
CCEA (Chicago Platinum)

DRIVER - In the junction box

- TRIAC/ELV less than 1% Standard
- 0-10
- Lutron Hi-lume Premier 0.1% Eco System LED Driver with soft-on, fade-to-black dimming technology
- DALI (Remote)

MOUNTING - Narrow housing includes mounting brackets

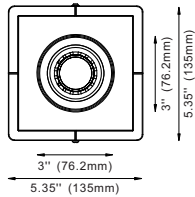
CEILING INSTALLATION



LG-9003-AC

3" Nonadjustable
Recessed Downlight LED

TRIM



Project Information:	Project Name:
Fixture Type:	Location:

LED TYPE	CL2-9W CITIZEN	CL2-13W CITIZEN	Warm Dim CL2-13WD BRIGLUXE	Tunable White CL2-13WT BRIGLUXE
DELIVERED LUMENS	950	1250	940	910
WATTS	9W	13W	13W	13W
CRI	95			
COLOR TEMPERATURE	2700K / 3000K / 35000K / 4000K		1800K -3000K	2700K -6500K
VOLTAGE	120V / 277V			
DIMMING	<ul style="list-style-type: none"> • TRIAC /ELV (Down to > 1%) - STANDARD • 0 -10 v (Down to > 5%) • Lutron (Hi-lume Premier 0.1 % Eco System LED Driver with Soft-on, Fade-to-black dimming technology) • DALI (Remote) 			
POWER SUPPLY	Constant current driver 36Vdc /250mA	Constant current driver 36Vdc /350mA	Constant current driver 36Vdc/350mA	Constant current driver 36Vdc /350mA
BEAM SPREAD	15°/24°/38°/60°			
OPTICS	Soft Focus/ Frosted / Linear Spread/ Prismatic			
DIFFUSERS	Honeycomb			
ADJUSTABILITY	Non Adjustable			
HOUSING	IC RATED/AIR TIGHT/CCEA (CHICAGO PLEANUM)			
FINISH	GYPSUM/SEAMLESS			

Product Features

- Revolutionary flush mounted, trimless & seamless design
- Made out of Environmentally Friendly Plaster Materials
- Our plaster fixture can be painted using your standard paint colors
- Energy efficient LED light engines
- Versatile field changeable optics
- Dimmable with a variety of commonly used drivers
- Fixtures can be used with all Smart House Systems such as Lutron, Vantage, Control 4, Crestron and others
- Easy installation for new construction and remodel applications
- Wet Location rated