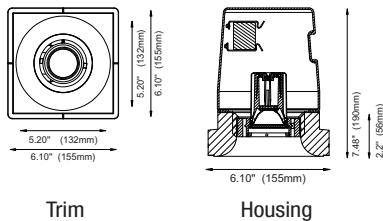


LG-9015A-AC

4" Adjustable Recessed Downlight LED



Quick Info



Application New Construction / Remodeling		
Delivered Lumens 950 lm (9W)/ 1250 lm (13W)/ 1800 lm (17W)		Color Quality 95 CRI, 2-step SDCM
Color Temperature 2700K 3000K 3500K 4000K	Warm Dim Option 1800K-3000K 940 lm (13W) Tunable White Option 2700K-6500K 910 lm (13W)	Light Distribution General Wall Wash
Input Voltage 120/277V		Dimming TRIAC/ ELV
Trims Gypsum Flangeless (seamless)		
Housing Ratings IC Rated / Air Tight / CCEA		Module Ratings Wet Location
Guarantee 40,000 hrs 3 years		Additional Dimming Options 0-10 / DALI Dimming / Lutron EcoSystem

Project Information:	Project Name:
Fixture Type:	Location:

HARMONY

Plaster Recessed Downlight LED - Trumpet

Harmony downlights are solid plaster lighting solutions made from gypsum, an abundant and stable mineral found in the Earth's crust. Plaster gives you a seamless and trimless lighting application. Our innovative downlight is virtually maintenance free because its monolithic installation eliminates the need for touch ups after servicing. This light fixture does not need a mud-in ring on top of drywall, saving on materials and installation time. Our flangeless downlights are paintable and manufactured at the highest possible level 5 plaster finish.

LED lighting engine is high performance, low power that provides outstanding reliability and color quality/consistency. 2700K, 3000K, 3500K, and 4000K color temperatures are available with 95 CRI. Also available in Warm dim & Tunable white.

- Life Rated for 40,000 hours at 70% lumen maintenance

LG-9015A-AC

4" Adjustable
Recessed Downlight LED

Project Information:	Project Name:
Fixture Type:	Location:

Ordering Guide

PRODUCT CODE

LG - 9015A-AC

Example Number

LG-9015A-AC CL2-9W 30K 95 38 SF FL T

Order Number

LG-9015A-AC _____

LED OPTIONS

OUTPUT

- ☐ CL2-9MR - 950 LUM (9W) (STANDARD)
- ☐ CL2-13MR - 1250 LUM (13W)
- ☐ CL2-17MR - 1800 LUM (17W)

COLOR TEMPERATURE

- ☐ 27K - 2700K
- ☐ 30K - 3000K
- ☐ 35K - 3500K
- ☐ 40K - 4000K

OR

WARM DIM

- ☐ CL2 - 13WD - 1800K -3000K 940 LUM (13W)

TUNABLE WHITE

- ☐ CL2 - 13TW - 2700K-6500K 910 LUM (13W)

CRI

- ☐ 95 - 95 CRI

BEAM SPREAD

- ☐ 15 °
- ☐ 24 °
- ☐ 38 ° (STANDARD)
- ☐ 60 °

LENS OPTICAL

- ☐ HBL - Honeycomb
- ☐ SF - Soft Focus
- ☐ FR - Frosted
- ☐ LS - Linear Spread
- ☐ PR - Prismatic

LENS HOLDER

- ☐ FL - Flat (STANDARD)
- ☐ CY1 - Cylinder 1"
- ☐ CY2 - Cylinder 2"
- ☐ CY3 - Cylinder 3"
- ☐ CO - Conical

DIMMING OPTION

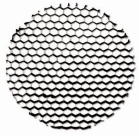
- ☐ T - Triac/ELV (STANDARD)
- ☐ D - DALI
- ☐ ECO - (Hi - lume Premier 0.1% Eco System LED Driver with Soft-on, Fade-to-black dimming technology)
- ☐ 0 - 10

LG-9015A-AC

4" Adjustable
Recessed Downlight LED

Project Information:	Project Name:
Fixture Type:	Location:

ACCESSORIES



Honeycomb Black



Soft Focus



Flat (WH/BL)



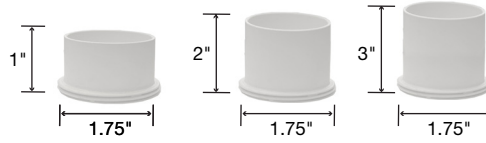
15° Light Beam



Frosted



Linear Spread



Cylinder (BL/WH)



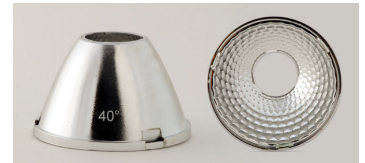
24° Light Beam



Prismatic



Conical (WH/BL)



38° Light Beam

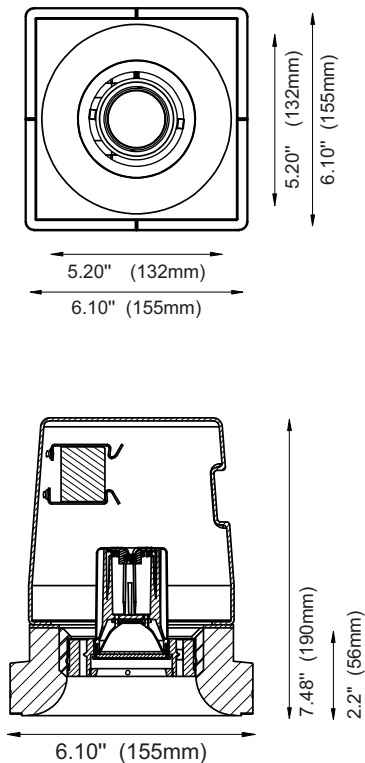
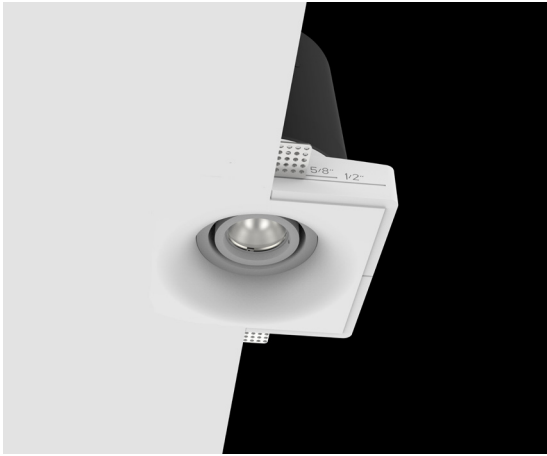


60° Light Beam

LG-1001

Universal Housing
Narrow

HOUSING



Project Information:	Project Name:
Fixture Type:	Location:

INPUT 120/277V

HOUSING RATING - UL, cUL, IC rated, Air tight
CCEA (Chicago Platinum)

DRIVER - In the junction box

- TRIAC/ELV less than 1% (Standard)
- 0-10
- Lutron Hi-lume Premier 0.1% Eco System LED Driver with soft-on, fade-to-black dimming technology
- DALI (Remote)

MOUNTING - Narrow housing includes mounting brackets

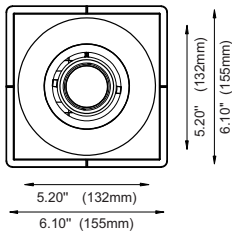
CEILING INSTALLATION



LG-9015A-AC

4" Adjustable
Recessed Downlight LED

TRIM



Project Information:	Project Name:
Fixture Type:	Location:



LED TYPE	CL2-9W CITIZEN	CL2-13W CITIZEN	CL2-17W CITIZEN	Warm Dim CL2-13WD BRIGLUXE	Tunable White CL2-13WT BRIGLUXE
DELIVERED LUMENS	950	1250	1800	940	910
WATTS	9W	13W	17W	13W	13W
CRI	95				
CRI OPTION	2700K / 3000K / 35000K / 4000K			1800K -3000K	2700K -6500K
VOLTAGE	120V / 277V				
DIMMING	<ul style="list-style-type: none"> • TRIAC /ELV (Down to > 1%) - STANDARD • 0 -10 v (Down to > 5%) • Lutron (Hi-lume Premier 0.1 % Eco System LED Driver with Soft-on, Fade-to-black dimming technology) • DALI 				
POWER SUPPLY	Constant current driver 36Vdc /250mA	Constant current driver 36Vdc /350mA	Constant current driver 36Vdc /450mA	Constant current driver 36Vdc/350mA	Constant current driver 36Vdc /350mA
BEAM SPREAD	15°/24°/38°/60°				
OPTICS	Soft Focus/ Frosted / Linear Spread/ Prismatic				
DIFFUSERS	Honeycomb				
ADJUSTABILITY	Adjustable 30° Max				
HOUSING	IC RATED/AIR TIGHT/CCEA (CHICAGO PLEANUM)				
FINISH	GYPSUM/SEAMLESS				

Product Features

- Revolutionary flush mounted, trimless and seamless design
- Made out of Environmentally Friendly Plaster Materials
- Our plaster fixture can be painted using your standard paint colors
- Energy efficient LED light engines
- Versatile field changeable optics
- Dimmable with a variety of commonly used drivers
- Fixtures can be used with all Smart House Systems such as Lutron, Vantage, Control 4, Crestron and others
- Easy installation for new construction and remodel applications
- Wet Location rated
- For best results, do not paint the inside of the fixture. If painting is necessary we recommend using a spraying technique. Painting with a brush will reveal brush strokes when illuminated.