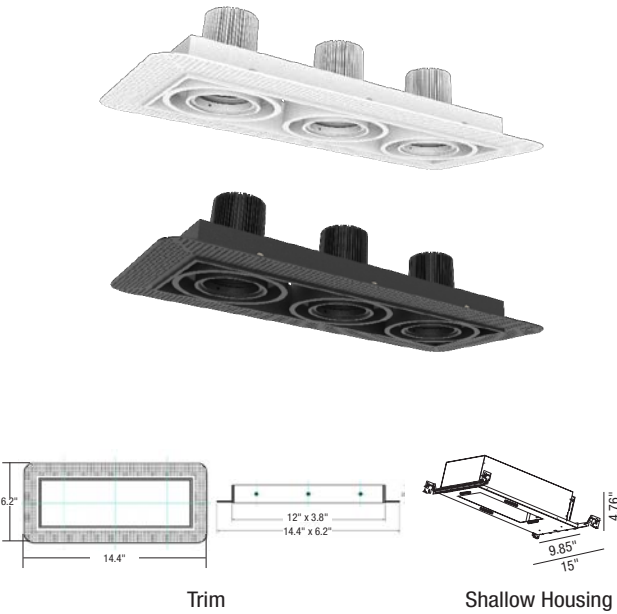


LG-9023

3" Adjustable Recessed Downlight LED - Triple



Project Information:	Project Name:
Fixture Type:	Location:

BOOST

Metal Recessed Downlight LED - 1x3 Square

Innovative flangeless adjustable light fixture with a cost-effective aluminum construction. Trimless design makes for quick installation and customization. Unique gimbal design allows for easy removal, preventing damage to delicate plaster finishes during maintenance. Available with a diverse collection of optics and accessories. All of our products use only the highest quality LED chips and components.

LED lighting engine is high performance, low power that provides outstanding reliability and color quality/consistency. 2700K, 3000K, 3500K, and 4000K color temperatures are available with 95 CRI. Warm dim and tunable white are also available.

- Fixtures can be used with all Smart House Systems such as Lutron, Vantage, Control4, Crestron and others
- Life Rated for 40,000 hours at 70% lumen maintenance

Quick Info



Application New Construction / Remodeling	
Delivered Lumens 3 x 950 lm (9W) / 3 x 1250 lm (13W) / 3 x 1800 lm (17W)	Color Quality 95 CRI, 2-step SDCM
Color Temperature 2700K 3000K 3500K 4000K	Warm Dim Option 3 x 1800K-3000K 940 lm (13W) Tunable White Option 3 x 2700K-6500K 910 lm (13W)
Light Distribution General Wall Wash	
Input Voltage 120/277V	Dimming TRIAC/ ELV
Trims Aluminum Powder Coated	
Housing Ratings IC Rated / Air Tight / CCEA	Module Ratings Wet Location
Guarantee 40,000 hrs 3 years	Additional Dimming Options 0-10 / DALI Dimming / Lutron EcoSystem

LG-9023

3" Adjustable
Recessed Downlight LED - Triple

Project Information:	Project Name:
Fixture Type:	Location:

Ordering Guide

PRODUCT CODE

LG - 9023

Example Number

[LG-9023](#) [CL2-9W](#) [30K](#) [95](#) [38](#) [SF](#) [T](#)

Order Number

[LG-9023](#) _____

LED OPTIONS

OUTPUT

- [CL2-9MR](#) - 950 LUM (9W) (STANDARD)
- [CL2-13MR](#) - 1250 LUM (13W)
- [CL2-17MR](#) - 1800 LUM (17W)

COLOR TEMPERATURE

- [27K](#) - 2700K
- [30K](#) - 3000K
- [35K](#) - 3500K
- [40K](#) - 4000K

OR

WARM DIM

- [CL2 - 13WD](#) - 1800K -3000K 940 LUM (13W)

TUNABLE WHITE

- [CL2 - 13TW](#) - 2700K-6500K 910 LUM (13W)

CRI

- [95](#) - 95 CRI

BEAM SPREAD

- [15 °](#)
- [24 °](#)
- [38 °](#) (STANDARD)
- [60 °](#)

LENS OPTICAL

- [HBL](#) - Honeycomb
- [SF](#) - Soft Focus
- [FR](#) - Frosted
- [LS](#) - Linear Spread
- [PR](#) - Prismatic

DIMMING OPTION

- [T](#) - Triac/ELV (STANDARD)
- [D](#) - DALI
- [ECO](#) - (Hi - lume Premier 0.1% Eco System LED Driver with Soft-on, Fade-to-black dimming technology)
- [0 - 10](#)

LG-9023

3" Adjustable
Recessed Downlight LED - Triple

Project Information:	Project Name:
Fixture Type:	Location:

ACCESSORIES



Honeycomb Black



Soft Focus



Flat (WH/BL)



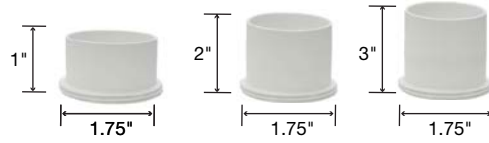
15° Light Beam



Frosted



Linear Spread



Cylinder (BL/WH)



24° Light Beam



Prismatic



Conical (WH/BL)



38° Light Beam

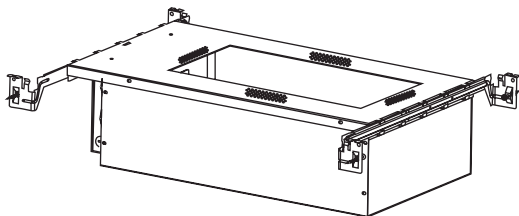
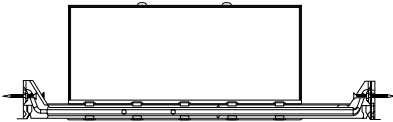
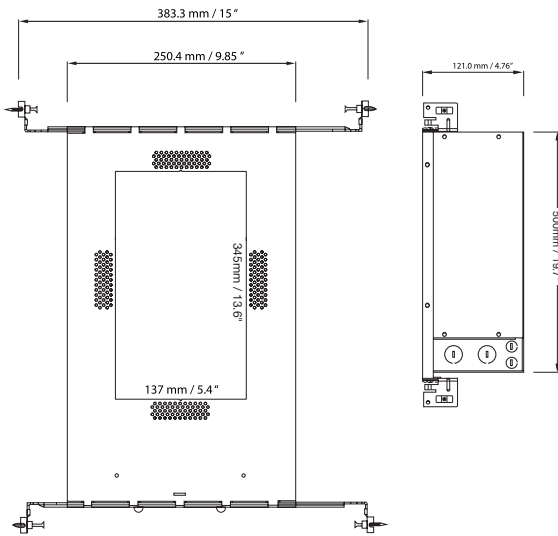


60° Light Beam

LG -1004/3

Universal Housing
Shallow

HOUSING



Project Information:	Project Name:
Fixture Type:	Location:

INPUT 120/277V

HOUSING RATING - UL, cUL, IC-rated, Air tight
CCEA (Chicago Platinum)

DRIVER - In the junction box

- TRIAC/ELV less than 1% (Standard)
- 0-10
- Lutron Hi-lume Premier 0.1% Eco System LED Driver with soft-on fade-to-black dimming technology
- DALI

MOUNTING - Shallow housing includes universal mounting brackets and hanger bars

CEILING INSTALLATION

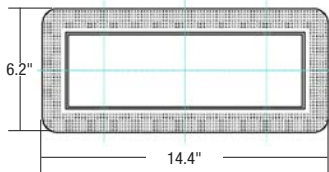
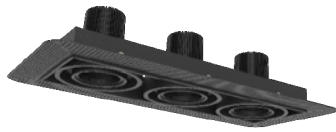
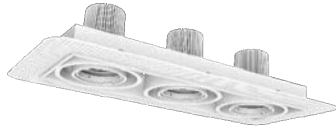


LG-9023

3" Adjustable
Recessed Downlight LED - Triple

Project Information:	Project Name:
Fixture Type:	Location:

TRIM



LED TYPE	CL2-9W CITIZEN	CL2-13W CITIZEN	CL2-17W CITIZEN	Warm Dim CL2-13WD BRIGLUXE	Tunable White CL2-13WT BRIGLUXE
DELIVERED LUMENS	950	1250	1800	940	910
WATTS	3 x 9W	3 x 13W	3 x 17W	3 x 13W	3 x 13W
CRI	95				
CRI OPTION	2700K / 3000K / 35000K / 4000K			1800K -3000K	2700K -6500K
VOLTAGE	120V / 277V				
DIMMING	<ul style="list-style-type: none"> • TRIAC /ELV (Down to > 1%) - STANDARD • 0 -10 v (Down to > 5%) • Lutron (Hi-lume Premier 0.1 % Eco System LED Driver with Soft-on, Fade-to-black dimming technology) • DALI 				
POWER SUPPLY x 3	Constant current driver 36Vdc /250mA	Constant current driver 36Vdc /350mA	Constant current driver 36Vdc /450mA	Constant current driver 36Vdc/350mA	Constant current driver 36Vdc /350mA
BEAM SPREAD	15°/24°/38°/60°				
OPTICS	Soft Focus/ Frosted / Linear Spread/ Prismatic				
DIFFUSERS	Honeycomb				
ADJUSTABILITY	Adjustable 30° Max				
HOUSING	IC RATED/AIR TIGHT/CCEA (CHICAGO PLEANUM)				
FINISH	Aluminum Powder Coated				

Product Features

- Revolutionary flush mounted, trimless and seamless design
- Made out of Environmentally Friendly Plaster Materials
- Our plaster fixture can be painted using your standard paint colors
- Energy efficient LED light engines
- Versatile field changeable optics
- Dimmable with a variety of commonly used drivers
- Fixtures can be used with all Smart House Systems such as Lutron, Vantage, Control 4, Crestron and others
- Easy installation for new construction and remodel applications
- Wet Location rated