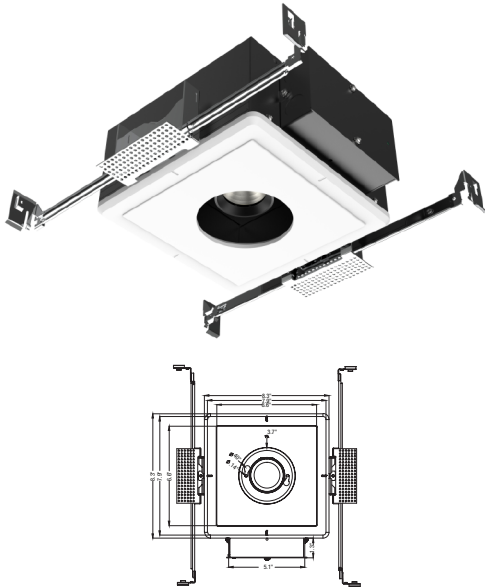


# LG-9034

## Multiple 3" Adjustable Recessed Downlight LED



Project Information:	Project Name:
Fixture Type:	Location:

## ULTRA BOOST

### Plaster Recessed Downlight LED - Round

Premium Plaster light fixture which allows for a seamless and trimless installation. Ultra Boost is comprised of aluminum and gypsum, an abundant and stable mineral found in the Earth's crust. We manufacture a solid level 5 plaster finish around the aperture opening, eliminating the need for a mud-in ring. Our two-step application is minimum labor with high level aesthetics. The adjustable light source levitates in powder coated, double pane aluminum housing to conceal all wiring. It can be positioned recessed or flush with the aperture opening. It is available in square and round.

LED lighting engine is high performance, low power that provides outstanding reliability and color quality/consistency. 2700K, 3000K, 3500K, 4000K color temperatures are available with 95 CRI. Warm dim and tunable white are also available.

- Life Rated for 40,000 hours at 70% lumen maintenance
- All testing reports are based on published industry procedures



## Quick Info

<b>Application</b> New Construction / Remodeling		
<b>Delivered Lumens</b> 1250 lm (13W)		<b>Color Quality</b> 95 CRI, 2-step SDCM
<b>Color Temperature</b> 2700K 3000K 3500K	<b>Warm Dim Option</b> 1800K-3000K 940 lm (13W)  <b>Tunable White Option</b> 2700K-6500K 910 lm (13W)	<b>Light Distribution</b> General Wall Wash
<b>Input Voltage</b> 36Vdc		<b>Dimming</b> TRIAC/ ELV
<b>Trims</b> Gypsum Flangeless (seamless)	<b>Material</b> Aluminum - powder coated black Gypsum	<b>Adjustability</b> 30° Max
<b>Housing Ratings</b> IC Rated / Air Tight / CCEA		<b>Module Ratings</b> Wet Location
<b>Guarantee</b> 40,000 hrs   3 years		<b>Additional Dimming Options</b> 0-10 / DALI Dimming / Lutron EcoSystem

# LG-9034

Multiple 3" Adjustable  
Recessed Downlight LED

Project Information:	Project Name:
Fixture Type:	Location:

## Ordering Guide

### PRODUCT CODE

LG - 9034

### Example Number

LG-9034 CL2-13MR 30K 38 SF T

### Order Number

LG-9034 \_\_\_\_\_

### LED OPTIONS

#### OUTPUT

- ☐ CL2-13MR - 1250 LUM (13W)

#### COLOR TEMPERATURE

- ☐ 27K - 2700K
- ☐ 30K - 3000K
- ☐ 35K - 3500K

OR

#### WARM DIM

- ☐ CL2 - 13WD - 1800K -3000K 940 LUM (13W)

#### TUNABLE WHITE

- ☐ CL2 - 13TW - 2700K-6500K 910 LUM (13W)

### BEAM SPREAD

- ☐ 15 °
- ☐ 24 °
- ☐ 38 ° (STANDARD)
- ☐ 60 °

### LENS OPTICAL

- ☐ HBL - Honeycomb
- ☐ SF - Soft Focus (STANDARD)
- ☐ FR - Frosted
- ☐ LS - Linear Spread
- ☐ PR - Prismatic

### DIMMING OPTION

- ☐ T - Triac/ELV (STANDARD)
- ☐ D - DALI
- ☐ ECO - (Hi - lume Premier 0.1% Eco System LED Driver with Soft-on, Fade-to-black dimming technology)
- ☐ 0 - 10

# LG-9034

Multiple 3" Adjustable  
Recessed Downlight LED

Project Information:	Project Name:
Fixture Type:	Location:

## ACCESSORIES

### OPTICAL LENS



Honeycomb Black



Soft Focus



Frosted

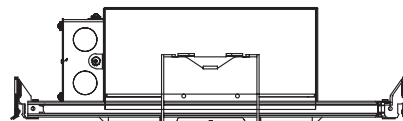
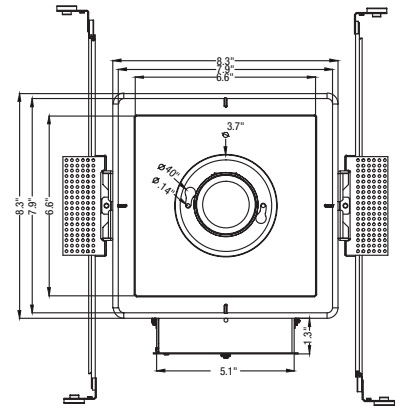
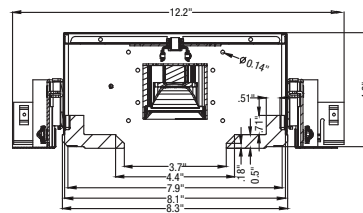
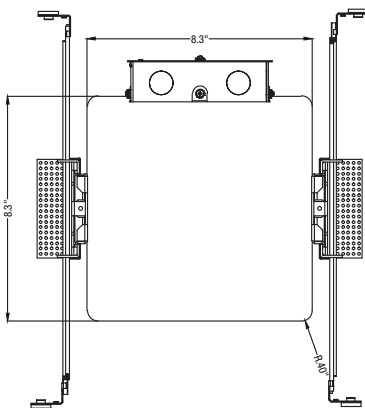


Linear Spread



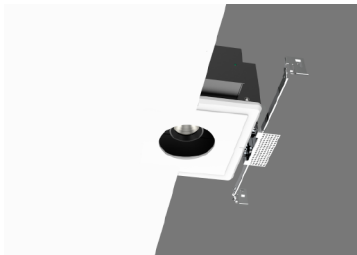
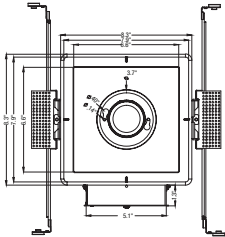
Prismatic

## DIMENSIONS



# LG-9034

## Multiple 3" Adjustable Recessed Downlight LED



Project Information:	Project Name:
Fixture Type:	Location:

LED TYPE	CL2-13W CITIZEN	Warm Dim CL2-13WD BRIGLUXE	Tunable White CL2-13WT BRIGLUXE
DELIVERED LUMENS	1250	940	910
WATTS	13W	13W	13W
CRI	95		
COLOR TEMPERATURE	2700K / 3000K / 35000K / 4000K	1800K -3000K	2700K -6500K
VOLTAGE	120V / 277V		
DIMMING	<ul style="list-style-type: none"> <li>• TRIAC /ELV (Down to &gt; 1%) - STANDARD</li> <li>• 0 -10 v (Down to &gt; 5%)</li> <li>• Lutron (Hi-lume Premier 0.1 % Eco System LED Driver with Soft-on, Fade-to-black dimming technology)</li> <li>• DALI (Remote)</li> </ul>		
POWER SUPPLY	Constant current driver 36Vdc /350mA	Constant current driver 36Vdc/350mA	Constant current driver 36Vdc /350mA
BEAM SPREAD	15°/24°/38°/60°		
OPTICS	Soft Focus/ Frosted / Linear Spread/ Prismatic		
DIFFUSERS	Honeycomb		
ADJUSTABILITY	Adjustable - 30° Max		
HOUSING	IC RATED/AIR TIGHT/CCEA (CHICAGO PLENUM)		
FINISH	GYPSUM/SEAMLESS		
MATERIAL	Aluminum - powder coated black		

### Product Features

- Revolutionary flush mounted, trimless & seamless design
- Made out of Environmentally Friendly Plaster Materials
- Energy efficient LED light engines
- Dimmable with a variety of commonly used drivers
- Fixtures can be used with all Smart House Systems such as Lutron, Vantage, Control 4, Crestron and others
- Wet Location rated