

# INSTALLATION INSTRUCTIONS

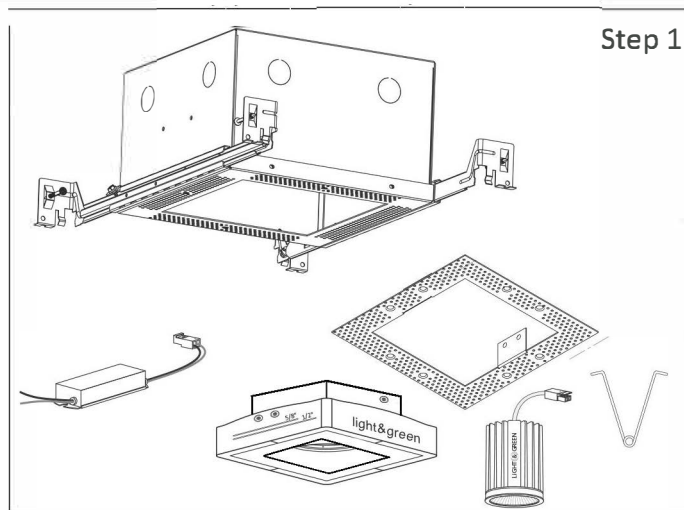
## PREPARING THE LUMINAIRE FOR SHALLOW HOUSING 1004-SQ

**LiGHT & GRiN**  
LIGHTING COMPANY

**SAVE THESE INSTRUCTIONS**

### RECESSED CEILING MOUNT LUMINAIRE:

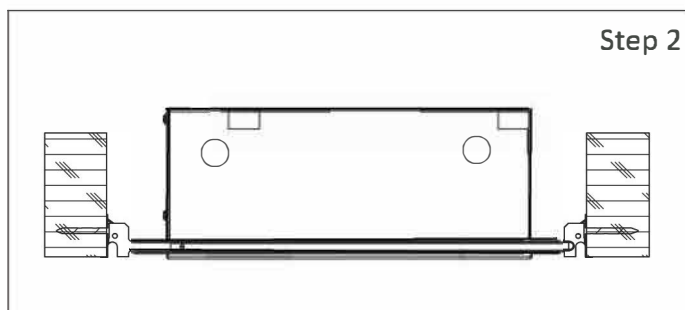
Model: LG-9001, LG-9003, LG-9013, LG-9013A, LG-9014, LG-9014A, LG-9015, LG-9015A, LG-9018, LG-9020 HARMONY DOWNLIGHTS



Step 1

### Step 1 - Luminaire Parts and Tools for Installation:

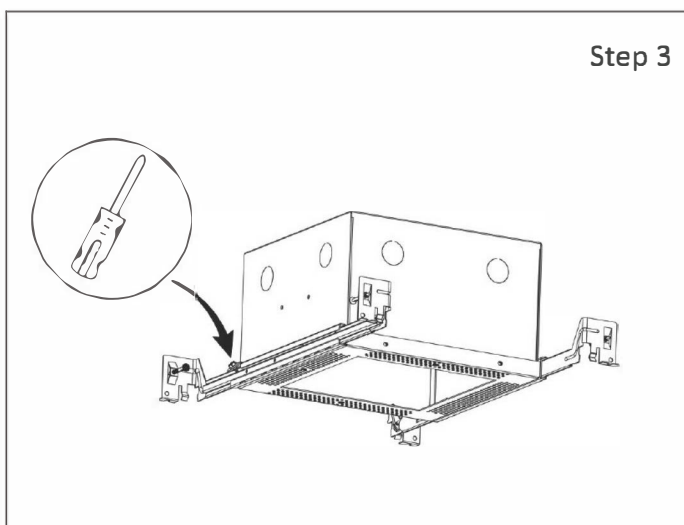
- Unpack all Fixture Parts and get to know them.



Step 2

### Step 2 - Install Housing to Wood-Joist:

- Select the location to Install this Fixture on Ceiling.
- Place Hanger Bar to Wood Joist and secure using the captive Nails.
- Assure that the housing aperture will be flush to the back of the drywall.



Step 3

### Step 3 - Lock Housing in Place

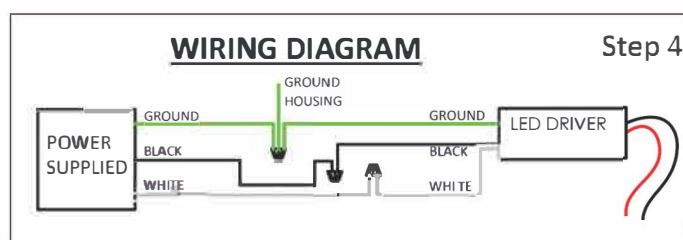
- Adjust horizontally and lock in place with the screw provided.

READ AND UNDERSTAND ALL INSTRUCTIONS BEFORE INSTALLATION. IF YOU ARE NOT FAMILIAR WITH THE NATIONAL ELECTRICAL CODE (NEC), CONTACT A QUALIFIED ELECTRICIAN TO INSTALL THIS LUMINAIRE.

**WARNING** - Before installing this luminaire or doing any maintenance, turn off the power supply at the circuit breaker or fuse box. Turning the power off using the light switch is not sufficient to prevent electrical shock.

### NOTE:

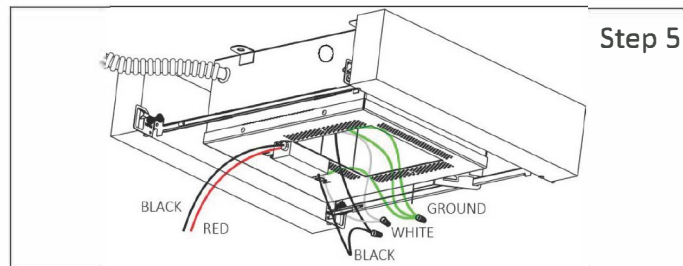
To re-lamp, replacement parts or additional information, contact or visit manufacturer at [www.lightandgreen.com](http://www.lightandgreen.com).



Step 4

### Step 4 - Connect Power Supply.

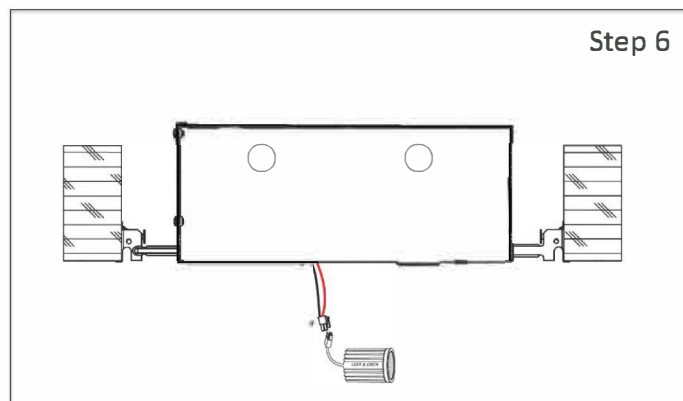
- Connect Power Supply using Conduit Fitting (By Others).
- Pull out Supply Wires and make Wiring Connections, see Wire Diagram.



Step 5

### Step 5 - Place the Driver:

- Place the driver inside the housing, using the clip will keep it out of the way.



Step 6

### Step 6 - Test the LED:

- Run Output Wires through the Housing Opening.
- "\*" Indicates the (Quick Connector) that comes with the LED and must be connected to driver; (red wire to red wire & black wire to black wire)
- Connect the LED Light and turn Switch On to make sure it lights up.
- Remove the LED and save for later.

## PREPARING THE LUMINAIRE

Model: LG-9001, LG-9003, LG-9013, LG-9013A, LG-9014, LG-9014A, LG-9015, LG-9015A, LG-9018, LG-9020 HARMONY DOWNLIGHTS

