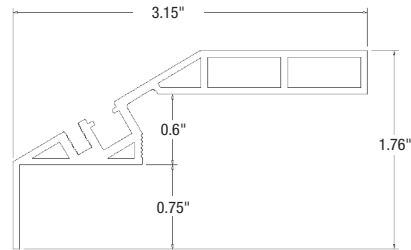
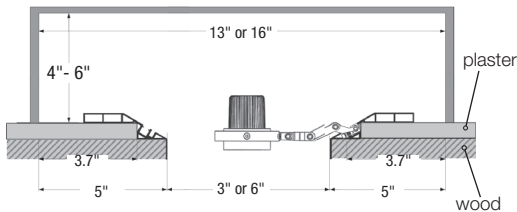
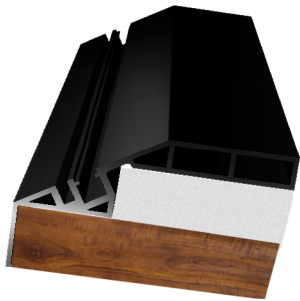
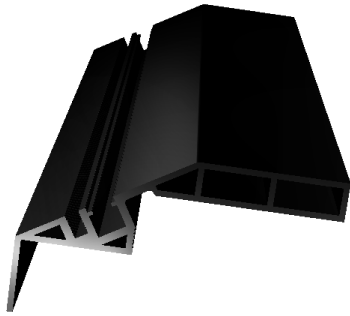


# LG-5008PW

## Aluminum Track For Plaster & Wood Combination



## KNIFE EDGE

### Invisible Track Light System - for a combination of wood and plaster

Revolutionary Knife Edge invisible track light rail system. This versatile track system is field cuttable and can be used to finish drywall, wood or a combination of drywall and wood. Optional spot head lighting attachments for Knife Edge have a full range of mobility and are field changeable, allowing for placement adjustments throughout the rail system.

Optional LED lighting engine is high performance, low power that provides outstanding reliability and color quality/consistency. 2700K, 3000K, 3500K, 4000K color temperatures are available with 95 CRI. Warm dim and tunable white LEDs are also available.

- Applications: track lighting, cove lighting, finishes for drop ceiling and soffit ceilings
- Fixtures are offered with a choice of spot, narrow flood or flood beam pattern
- Life Rated for 40,000 hours at 70% lumen maintenance
- All testing reports are based on published industry procedures

## Product Features

- Revolutionary flush mounted trimless & seamless design which offers consistent aesthetics
- Aluminum profile available in black and white
- Easy installation for new construction and remodel applications
- Field cuttable
- Rail can be used for architectural details
- Applications: Cove lighting, Edge Lighting, Custom pockets for HVAC, Tracks, Cameras, etc.
- Finishes for Drop ceilings, Soffit ceilings
- Field cuttable. Tightly secure flat side down. Use a high RPM fine toothed table saw to cut.
- Damp Location Rated

## Ordering Guide

### PRODUCT CODE

☐ LG - 5008PW - 6.5' length\*

### TRACK COLOR

- ☐ BL - Black (STANDARD)
- ☐ WH - White

### Example Number

LG-5008PW BL

### Order Number

LG-5008PW \_\_\_\_\_

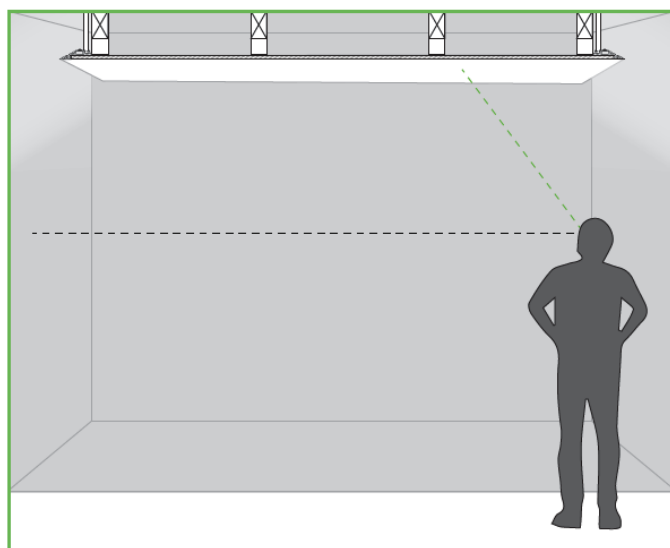
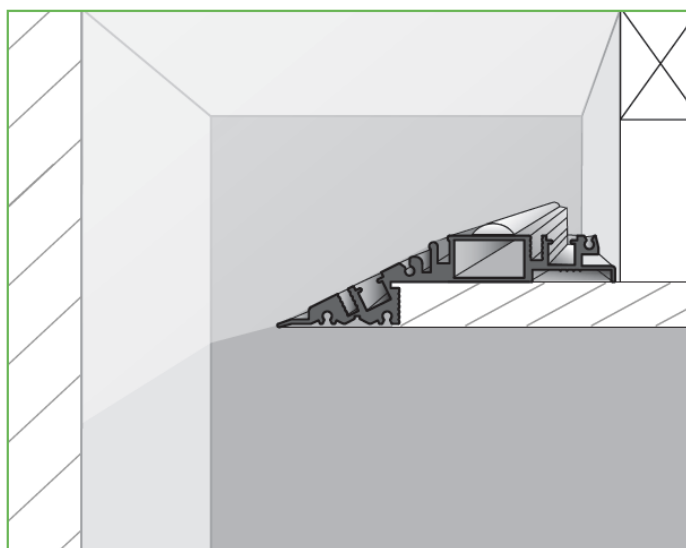
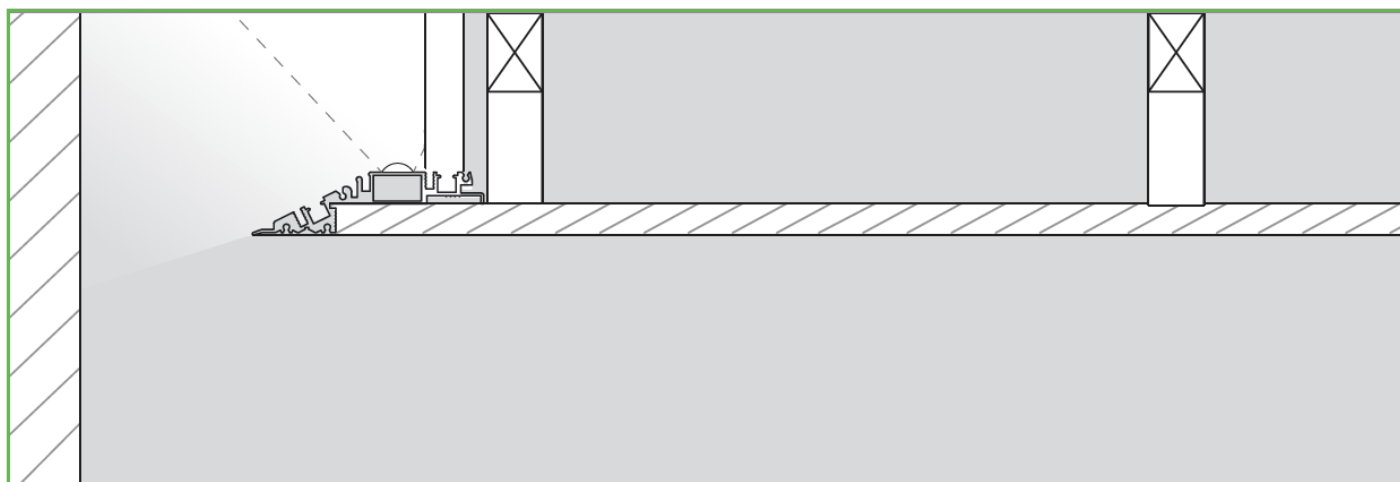
\*You will need to order one length per side for a channel  
You only need to order one side for drop or soffit ceiling

# LG-5008PW

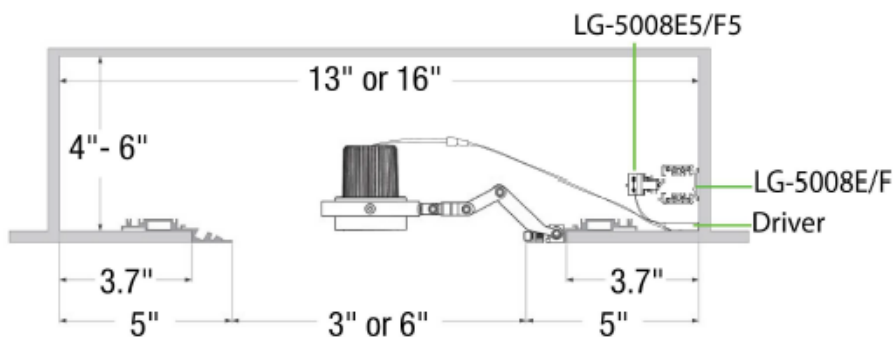
Aluminum Track  
For Plaster & Wood Combination

Project Information:	Project Name:
Fixture Type:	Location:

## Cove Lighting/Wall Wash



OPTIONAL ELECTRICIFIED CHANNEL AVAILABLE, SEE [LG-5008E](#) / [LG-5008F](#) SPEC SHEETS FOR MORE DETAIL



## LG-5008E

### 6 Foot - 3 Wire Track

### 1 Circuit Track - Multi Compatible

#### TECHINCAL DETAILS - LG-5008E

##### Body Construction

- Constructed of durable injection-molded plastic, steel and Aluminum

##### Electrical

- 1-Circuit power distribution system designed to extend the power between two track sections. With two (1) hot terminals and one common neutral, each circuit is rated 20A.

##### Compatibility

- Track is Compatible with all Light and Green 3 wire track fixtures 1 circuit accessories and connectors.
- The track and it's accessories include screws to secure it in place.
- All track sections supplied with two insulated end caps.

##### Description

- Light and Green 1-phase track is a high quality track system for the professional lighting market.
- The comprehensive range of Light and Green track accessories, gives Designer's the freedom choice, while making a track plan. The track can is easily shortened, with a metal saw. After cutting the track it is ready to install (no wiring adjustment needed).

##### Mounting

- The LG-5008E can be mounted as a Flush Pendant.

#### PHOTOGRAPH - LG-5008E

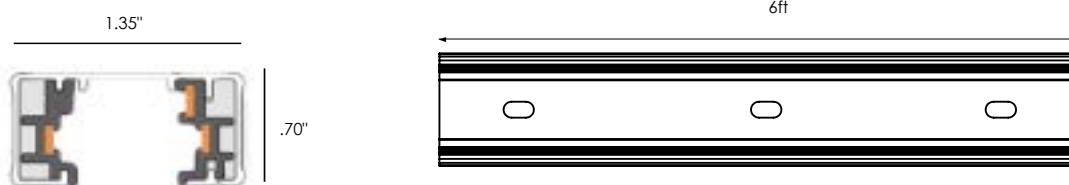


#### DESCRIPTION - LG-5008E

- Light and Green LG-5008E 1 Circuit Track
- 6 feet (72 inches)
- Available in Black and white
- cULus Listed



#### TECHNICAL DRAWING / POLARITY GROOVE - LG-5008E



#### ORDERING GUIDE - LG-5008E

LG-5008E - Color/Finish  
 BK : Black  
 WH : White  
 EXAMPLE : LG-5008E-BK

## LG-5008E1

**1 Circuit Live end Connector** - Ground on Left  
**1 Circuit Track Compatible**

### TECHINCAL DETAILS - LG-5008E1

#### Body Construction

- Constructed of durable injection-molded plastic, steel and Aluminum

#### Electrical

- 1-Circuit power distribution system designed to extend the power between two track sections. With one (1) hot terminal and one common neutral, each circuit is rated 20A.

#### Compatibility

- End Connector is Compatible with all Light and Green 3 wire track fixtures and 1-circuit accessories and connectors.
- The track and accessories include screws to secure it in place

#### Mounting

- This Live end Connector is placed at the end of a track

#### Labels

- cULus Listed

### PHOTOGRAPH - LG-5008E1

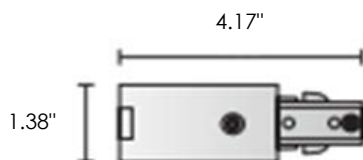


### DESCRIPTION - LG-5008E1

- Light and Green LG-5008E1 1-Circuit Live End Connector
- Available in Black and white



### TECHNICAL DRAWING / POLARITY GROOVE - LG-5008E1



### ORDERING GUIDE - LG-5008E1

LG-5008E1 -

Color/Finish

BK : Black

WH : White

EXAMPLE : LG-5008E1 - BK

## LG-5008E2

### 1 Circuit Mini Joiner

1 Circuit Track Compatible

#### TECHINCAL DETAILS - LG-5008E2

##### Body Construction

- Constructed of durable injection-molded plastic, steel and Aluminum

##### Electrical

- 1-Circuit power distribution system designed to extend the power between two track sections. With one (1) hot terminal and one common neutral, each circuit is rated 20A.

##### Compatibility

- Connector is Compatible with all Light and Green 3 wire track fixtures and 1-circuit accessories and connectors
- The track and accessories include screws to secure it in place

##### Mounting

- This Mini Joiner Connector is placed at the end of a track.

##### Labels

- cULus Listed

#### PHOTOGRAPH - LG-5008E2

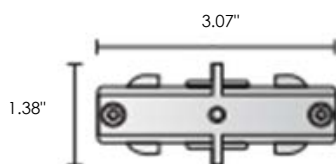


#### DESCRIPTION - LG-5008E2

- Light and Green LG-5008E2 1-Circuit Mini Joiner Connector
- Available in Black and white



#### TECHNICAL DRAWING / POLARITY GROOVE - LG-5008E2



#### ORDERING GUIDE - LG-5008E2

LG-5008E2 -

Color/Finish

BK : Black  
WH : White

EXAMPLE : LG-5008E2 - BK

## LG-5008E3

### 1 Circuit Straight Connector

#### 1 Circuit Track Compatible

##### TECHINCAL DETAILS - LG-5008E3

###### Body Construction

- Constructed of durable injection-molded plastic, steel and Aluminum

###### Electrical

- 1-Circuit power distribution system designed to extend the power between two track sections. With one (1) hot terminal and one common neutral, each circuit is rated 20A.

###### Compatibility

- Connector is Compatible with all Light and Green 3 wire track fixtures and 1-circuit accessories and connectors.
- The track and accessories include screws to secure it in place

###### Mounting

- This Straight Connector is placed at the end of a track

###### Labels

- cULus Listed

##### PHOTOGRAPH - LG-5008E3

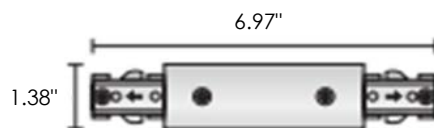


##### DESCRIPTION - LG-5008E3

- Light and Green LG-5008E3 1-Circuit Straight Connector
- Available in Black and white



##### TECHNICAL DRAWING / POLARITY GROOVE - LG-5008E3



##### ORDERING GUIDE - LG-5008E3

LG-5008E3 - Color/Finish

**BK** : Black  
**WH** : White

EXAMPLE : LG-5008E3 - BK

## LG-5008E4

### 1 Circuit Flexible Connector

1 Circuit Track Compatible

#### TECHINCAL DETAILS - LG-5008E4

##### Body Construction

- Constructed of durable injection-molded plastic, steel and Aluminum

##### Electrical

- 1-Circuit power distribution system designed to extend the power between two track sections. With one (1) hot terminal and one common neutral, each circuit is rated 20A.

##### Compatibility

- Flexible Connector is Compatible with all Light and Green 3 wire track fixtures and 1-circuit accessories and connectors.
- The track and accessories include screws to secure it in place

##### Mounting

- This Flexible Connector is placed between two Light and Green electrified tracks

##### Labels

- cULus Listed

#### PHOTOGRAPH - LG-5008E4

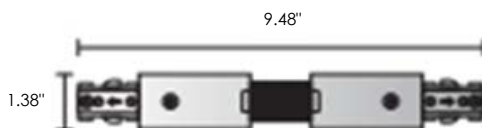


#### DESCRIPTION - LG-5008E4

- Light and Green LG-5008E4 1-Circuit track Flexible Connector
- Available in Black and white



#### TECHNICAL DRAWING / POLARITY GROOVE - LG-5008E4



#### ORDERING GUIDE - LG-5008E4

LG-5008E4 -

Color/Finish

BK : Black

WH : White

EXAMPLE : LG-5008E4 - BK

## LG-5008E5

### 1 Circuit Adapter

1 Circuit Track Compatible

#### TECHINCAL DETAILS - LG-5008E5

##### Body Construction

- Constructed of durable injection-molded plastic, steel and Aluminum

##### Electrical

- 1-Circuit power distribution system designed to extend the power between two track sections. With one (1) hot terminals and one common neutral, each circuit is rated 20A.

##### Compatibility

- I-connector is Compatible with all Light and Green 4 wire track fixtures and 1-circuit accessories and connectors.
- The track and accessories include screws to secure it in place

##### Mounting

- This adapter is placed between the Light and Green track and compatible fixtures.

##### Labels

- cULus Listed

#### PHOTOGRAPH - LG-5008E5

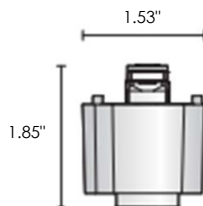


#### DESCRIPTION - LG-5008E5

- Light and Green LG-5008E5 1-Circuit Adapter
- Available in Black and white



#### TECHNICAL DRAWING / POLARITY GROOVE - LG-5008E5



#### ORDERING GUIDE - LG-5008E5

LG-5008E5 -

Color/Finish

BK : Black

WH : White

EXAMPLE : LG-5008E5 - BK

## LG-5008F

### 6 Foot - 4 Wire Track

### 2 and 3 Circuit Track - Multi Compatible

#### TECHINCAL DETAILS - LG-5008F

##### Body Construction

- Constructed of durable injection-molded plastic, steel and Aluminum

##### Electrical

- 3-Circuit power distribution system designed to extend the power between two track sections. With two (3) hot terminals and one common neutral, each circuit is rated 20A(2 x 20A = 40A max)

##### Compatibility

- Track is Compatible with all Light and Green 4 wire track fixtures + 2 and 3 circuit accessories and connectors.
- The track and it's accessories include screws to secure it in place.
- All track sections supplied with two insulated end caps.

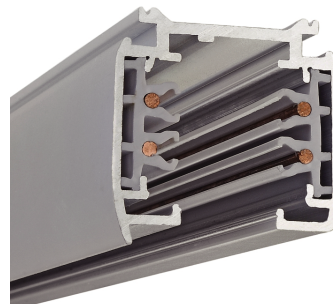
##### Description

- Light and Green 3-phase track is a high quality track system.
- The comprehensive range of Light and Green track accessories, gives Designer's the freedom choice, while making a track plan. The track can is easily shortened, with a metal saw. After cutting the track it is ready to install (no wiring adjustment needed).

##### Mounting

- The LG-5008F can be mounted as a Flush Pendant.

PHOTOGRAPH - LG-5008F

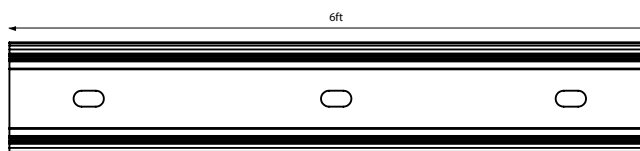
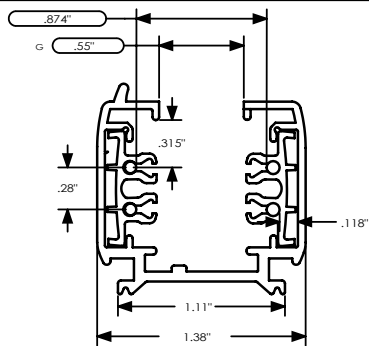


DESCRIPTION - LG-5008F

- Light and Green LG-5008F 2 and 3 Circuit Track
- 6 feet (72 inches)
- Available in Black and white
- cULus Listed



#### TECHNICAL DRAWING / POLARITY GROOVE - LG-5008F



#### ORDERING GUIDE - LG-5008F

LG-5008F -

Color/Finish

BK : Black

WH : White

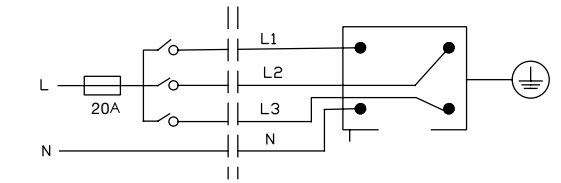
EXAMPLE : LG-5008F-BK

## LG-5008F

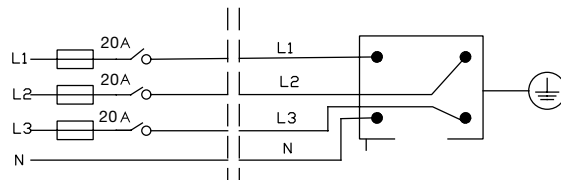
### 6 Foot - 4 Wire Track

2 and 3 Circuit Track - Multi Compatible

#### CONNECTING DIAGRAMS

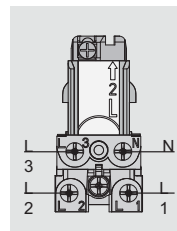
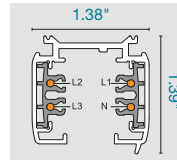


1 phase 120V 20A Max



3 phase 120V 3x20A Max

#### 3-Circuit Track

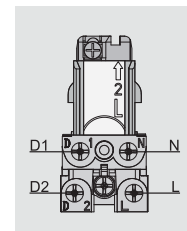
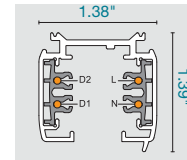


L1, L2, L3: fase, life wire  
N: neutral

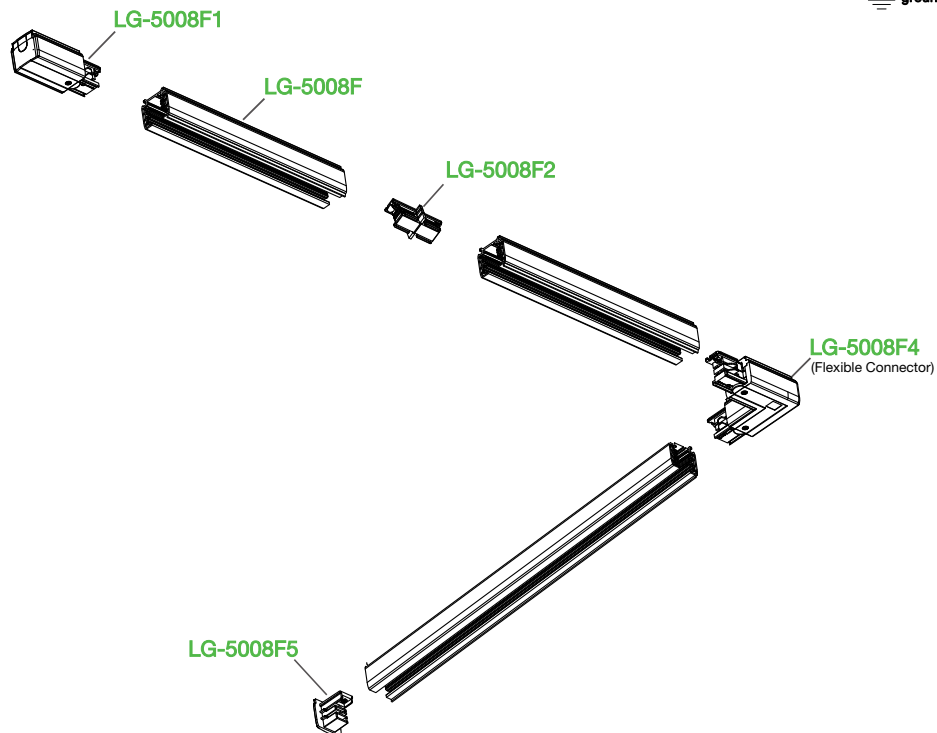


#### 1-Circuit Track DALI/0-10/ECO

Compatible to standard 3-CircuitTrack



L: fase, life wire  
N: neutral  
D1, D2: DALI/0-10/ECO



## LG-5008F1

### 3 Circuit Live end Connector - Ground on Left 3 Circuit Track Compatible

#### TECHINCAL DETAILS - LG-5008F1

##### Body Construction

- Constructed of durable injection-molded plastic, steel and Aluminum

##### Electrical

- 3-Circuit power distribution system designed to extend the power between two track sections. With two (2) hot terminals and one common neutral, each circuit is rated 20A(2 x 20A = 40A max)

##### Compatibility

- End Connector is Compatible with all Light and Green 4 wire track fixtures and 3-circuit accessories and connectors.

- The track and accessories include screws to secure it in place

##### Mounting

- This Live end Connector is placed at the end of a track

##### Labels

- cULus Listed

PHOTOGRAPH - LG-5008F1

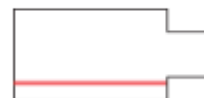
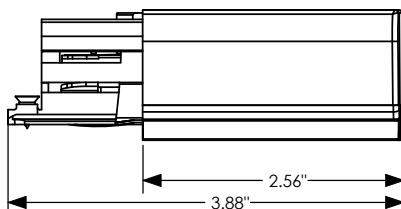
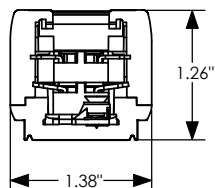


DESCRIPTION - LG-5008F1

- Light and Green LG-5008F1 3-Circuit Live End Connector
- Available in Black and white



#### TECHNICAL DRAWING / POLARITY GROOVE - LG-5008F1



#### ORDERING GUIDE - LG-5008F1

LG-5008F1 -

Color/Finish

BK : Black

WH : White

EXAMPLE : LG-5008F1 - BK

## LG-5008F2

### 3 Circuit Mini Joiner

3 Circuit Track Compatible

#### TECHINCAL DETAILS - LG-5008F2

##### Body Construction

- Constructed of durable injection-molded plastic, steel and Aluminum

##### Electrical

- 3-Circuit power distribution system designed to extend the power between two track sections. With two (2) hot terminals and one common neutral, each circuit is rated 20A(2 x 20A = 40A max)

##### Compatibility

- Connector is Compatible with all Light and Green 4 wire track fixtures and 3-circuit accessories and connectors
- The track and accessories include screws to secure it in place

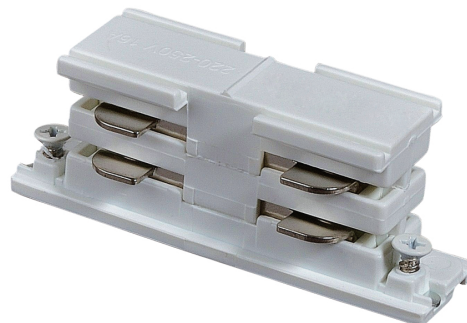
##### Mounting

- This Mini Joiner Connector is placed at the end of a track

##### Labels

- cULus Listed

#### PHOTOGRAPH - LG-5008F2

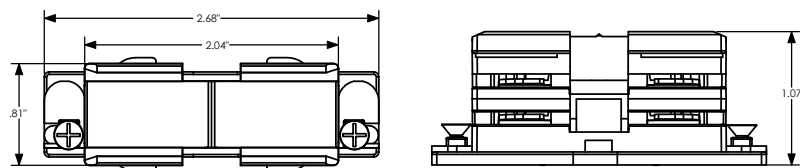


#### DESCRIPTION - LG-5008F2

- Light and Green LG-5008F2 3-Circuit Mini Joiner Connector
- Available in Black and white



#### TECHNICAL DRAWING / POLARITY GROOVE - LG-5008F2



#### ORDERING GUIDE - LG-5008F2

LG-5008F2 -  

Color/Finish

BK : Black

WH : White

EXAMPLE : LG-5008F2 - BK

## LG-5008F3

### 3 Circuit Straight Connector 3 Circuit Track Compatible

#### TECHINCAL DETAILS - LG-5008F3

##### Body Construction

- Constructed of durable injection-molded plastic, steel and Aluminum

##### Electrical

- 3-Circuit power distribution system designed to extend the power between two track sections. With two (3) hot terminals and one common neutral, each circuit is rated 20A(2 x 20A = 40A max)

##### Compatibility

- Connector is Compatible with all Light and Green 4 wire track fixtures and 3-circuit accessories and connectors.
- The track and accessories include screws to secure it in place

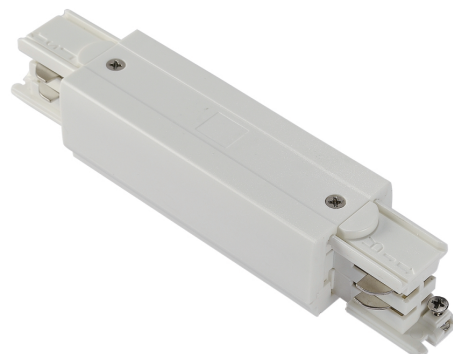
##### Mounting

- This Mini Joiner Connector is placed at the end of a track

##### Labels

- cULus Listed

#### PHOTOGRAPH - LG-5008F3

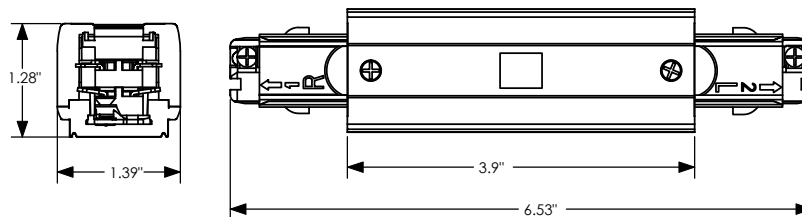


#### DESCRIPTION - LG-5008F3

- Light and Green LG-5008F3 3-Circuit Mini Joiner Connector
- Available in Black and white



#### TECHNICAL DRAWING / POLARITY GROOVE - LG-5008F3



#### ORDERING GUIDE - LG-5008F3

LG-5008F3 - Color/Finish

**BK** : Black  
**WH** : White

EXAMPLE : LG-5008F3 - BK

## LG-5008F4

### 3 Circuit I Flexible Connector

3 Circuit Track Compatible

#### TECHINCAL DETAILS - LG-5008F4

##### Body Construction

- Constructed of durable injection-molded plastic, steel and Aluminum

##### Electrical

- 3-Circuit power distribution system designed to extend the power between two track sections. With two (3) hot terminals and one common neutral, each circuit is rated 20A(2 x 20A = 40A max)

##### Compatibility

- Flexible Connector is Compatible with all Light and Greenwire track fixtures and 3-circuit accessories and connectors.
- The track and accessories include screws to secure it in place

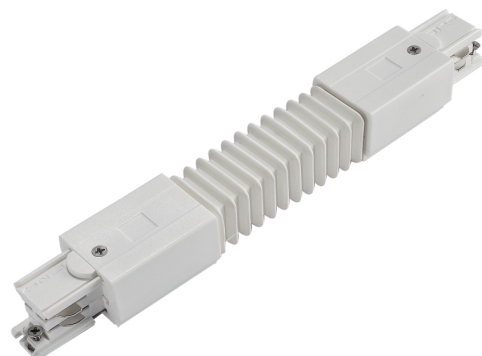
##### Mounting

- This Flexible I Connector is placed between two Light and Green electrified tracks

##### Labels

- cULus Listed

#### PHOTOGRAPH - LG-5008F4

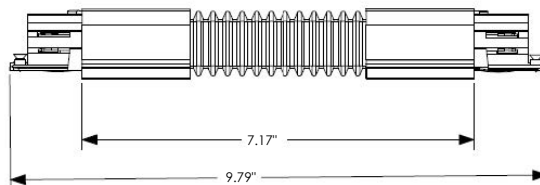


#### DESCRIPTION - LG-5008F4

- Light and Green LG-5008F4 3-Circuit track Flexible I Connector
- Available in Black and white



#### TECHNICAL DRAWING / POLARITY GROOVE - LG-5008F4



#### ORDERING GUIDE - LG-5008F4

LG-5008F4 -   Color/Finish

BK : Black

WH : White

EXAMPLE : LG-5008F4 - BK

## LG-5008F5

### 3 Circuit Adapter

3 Circuit Track Compatible

#### TECHINCAL DETAILS - LG-5008F5

##### Body Construction

- Constructed of durable injection-molded plastic, steel and Aluminum

##### Electrical

- 3-Circuit power distribution system designed to extend the power between two track sections. With two (3) hot terminals and one common neutral, each circuit is rated 20A(2 x 20A = 40A max)

##### Compatibility

- I-connector is Compatible with all Light and Green 4 wire track fixtures and 3-circuit accessories and connectors.
- The track and accessories include screws to secure it in place

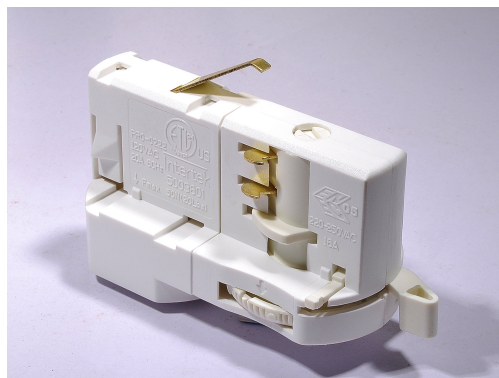
##### Mounting

- This adapter is placed between the Light and Green track and compatible fixtures.

##### Labels

- cULus Listed

#### PHOTOGRAPH - LG-5008F5

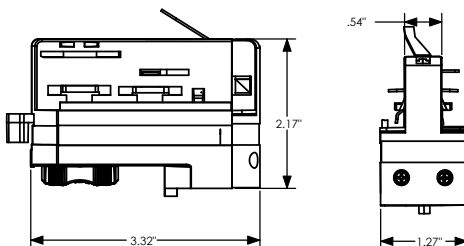


#### DESCRIPTION - LG-5008F5

- Light and Green LG-5008F5 3-Circuit Adaptor
- Available in Black and white



#### TECHNICAL DRAWING / POLARITY GROOVE - LG-5008F5



#### ORDERING GUIDE - LG-5008F5

LG-5008F5 -

BK : Black  
WH : White

EXAMPLE : LG-5008F5-BK