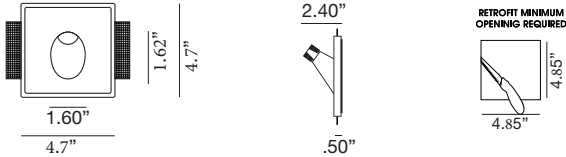
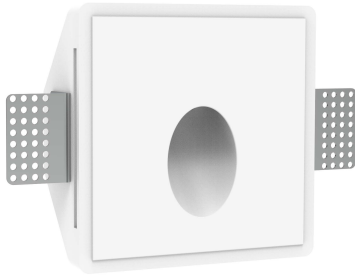


LG-4007

Wall Recessed Steplight LED

Project Information:	Project Name:
Fixture Type:	Location:



HARMONY

The Harmony LED Plaster Recessed Light

Revolutionary Plaster light fixture which allows for a truly seamless and trimless installation. Our fixtures are paintable and texturable using standard paint and paint colors.

LED lighting engine is high performance, low power that provides outstanding reliability and color quality/consistency. 2700K, 3000K color temperatures are available with 90 CRI.

- Life Rated for 40,000 hours at 70% lumen maintenance
- All testing reports are based on published industry procedures

Quick Info



Application New Construction / Remodeling	
Delivered Lumens 80 lm (1W)	Color Quality 90 CRI, 2-step SDCM
Color Temperature 2700K 3000K	Light Distribution Stairway Pathway
Input Voltage 120/277V	Dimming TRIAC
Trims Gypsum Flangeless (seamless)	
Housing Ratings N/A	Module Ratings Wet Location
Guarantee 40,000 hrs 3 years	Additional Dimming Options 0-10 / DALI Dimming / Lutron EcoSystem

LG-4007

Wall Recessed Steplight LED

Project Information:	Project Name:
Fixture Type:	Location:

Ordering Guide

PRODUCT CODE

LG-4007

COLOR TEMPERATURE

- 27K - 2700K
- 30K - 3000K (STANDARD)

DIMMING OPTION

- T - 10 - Triac, ELV/MLV, 0-10V
- D - Dali2
- Eco - HI-lume Premier 0.1% EcoSystem LED driver soft-on, fade-to-black dimming technology

*REQUIRED: Zone schedule, please include in your request how many lights on each switch leg.

EXAMPLE:

Switch Leg	Fixture Qty
1	12
2	8
3	9
4	5

Example Number:

LG-4007 — 27K — T-10
 Product Code Color Temperature Dimming Option

Order Number: _____

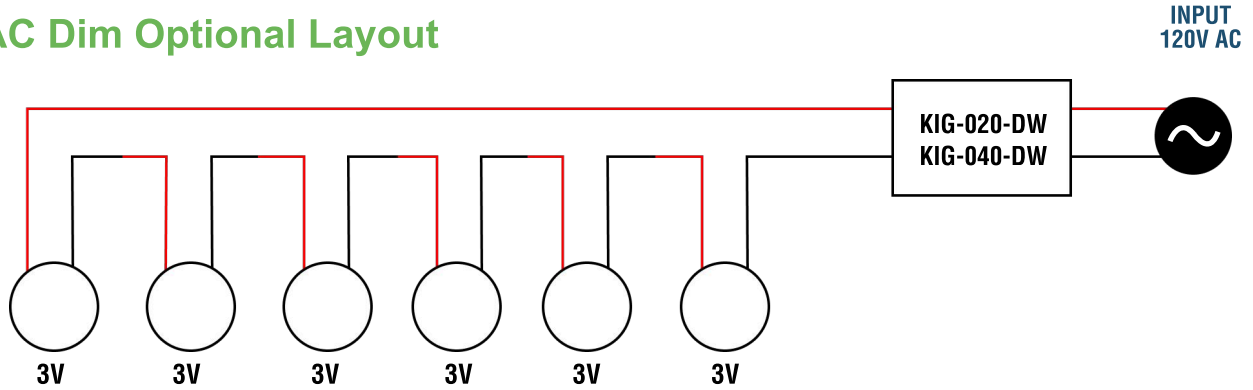
LG-4007 — _____ — _____
 Product Code Color Temperature Dimming Option

LG-4007

Wall Recessed Steplight LED

Project Information:	Project Name:
Fixture Type:	Location:

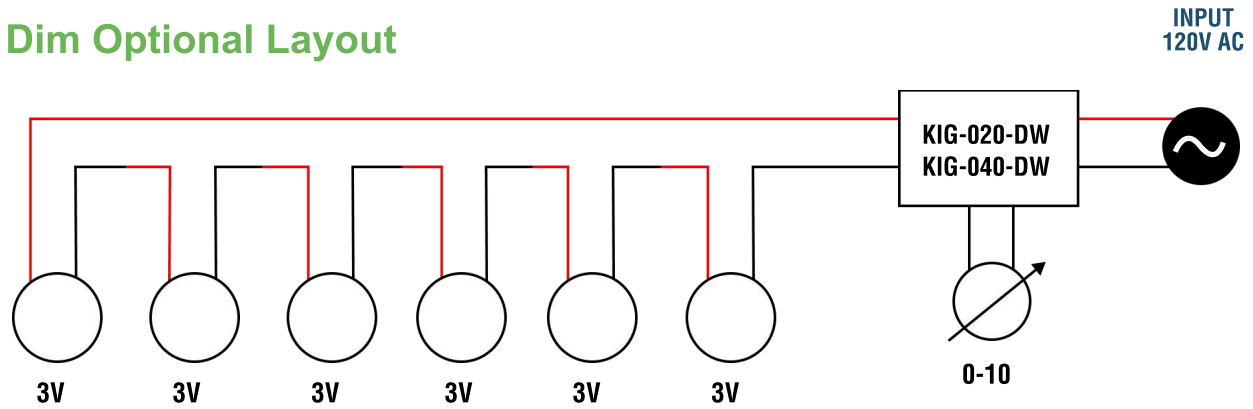
TRIAC Dim Optional Layout



KIG-020-DW carries a load of 1-14 fixtures

KIG-040-DW carries a load of 1-21 fixtures

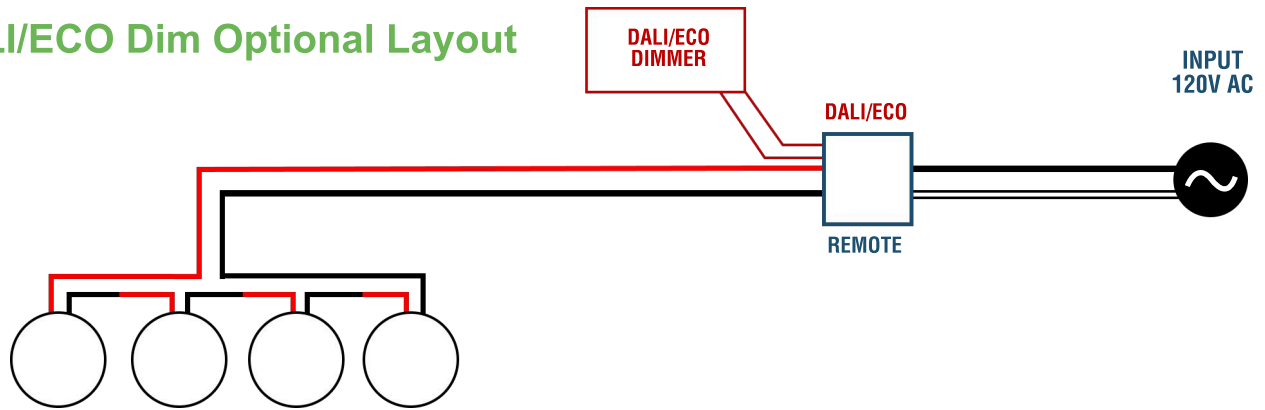
0-10 Dim Optional Layout



KIG-020-DW carries a load of 1-14 fixtures

KIG-040-DW carries a load of 1-21 fixtures

DALI/ECO Dim Optional Layout



Carries a load of 4-17 fixtures

KIG-DW Series 20W

Whole Family: KIG-XXX-DW - [10W 20W 40W 60W]



Class 2 Class P SELV CE RoHS



Features

Output:	Constant Current
NFC function:	Adjust output current by NFC
Range:	100-277VAC
PFC design:	Built-in active PFC function
Efficiency:	Up to 78%
Protections:	Short circuit/ over temperature
Heat dissipation:	Cooling by free air convection
Waterproof performance:	Full protection plastic housing, for dry, damp, locations
Dimming function:	<u>Phase dimming</u> : work with Forward phase, MLV and Reverse phase, ELV, TRIAC dimmers. <u>0-10V dimming</u> : 0-10V/1-10V/Potentiometer/10V PWM 4 in 1
Dimming range:	1-100%
Application:	Suitable for the application of indoor LED lighting
Warranty:	5 years warranty

Specification

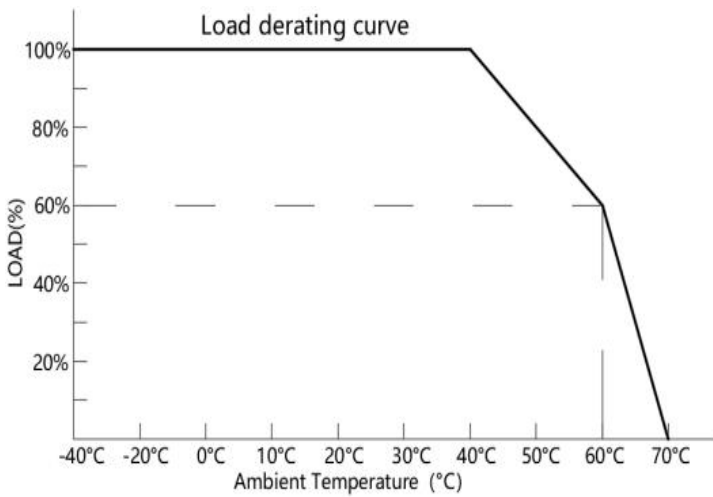
T ON ↓ OFF

Model		KIG-020-DW							
Output	Rated current(mA)	250mA ↓↓↓	350mA T↓↓	400mA ↓T↓	450mA ↓↓T	500mA TT↓	550mA T↓T	600mA ↓TT	700mA TTT
	Current Tolerance	±5%							
	DC Voltage (V)	3-42V	3-42V	3-42V	3-42V	3-40V	3-36V	3-33V	3-29V
	Rated power	10.5W	14.7W	16.8W	18.9W	20W	19.8W	19.8W	20.3W
	No-load voltage	52VMax							
Input	Rated Voltage	100-277VAC							
	Rated Frequency	47-63HZ							
	Power Factor	0.95@120VAC 60Hz			0.88@277VAC 60Hz				
	THD(Typ.) @ full load	9.33%@120VAC 60Hz			12.79%@277VAC 60Hz				
	Efficiency @ full load	78%@120VAC 60Hz			78%@277VAC 60Hz				
	No-load power	2.5W@120VAC 60Hz			2.69W@277VAC 60Hz				
	AC Current (Max.)	0.3A							
	Inrush Current	2.56A,18us@50%Ipeak 120VAC				3.04A,10us@50%Ipeak 277VAC			
Leakage current	<0.50mA								
Protection	Short Circuit	Constant current mode, recovers automatically after fault condition is removed							
	Over temperature	Ambient temp. over 50±5°C, output current will be reduced to 50%; Ambient temp. over 60±5°C,output current will be reduced to 0%; Ambient temp. over 45±5°C,recovers automatically after temp. Drops.							
Environment	Working TEMP.	-40-+60°C							
	Working Humidity	20-90%RH, non-condensing							
	Storage TEMP.Humidity	-40-+80°C,10-95%RH							
	TEMP. coefficient	±0.03%/°C (0-50°C)							
	Vibration	10-500Hz, 2G 10min./1 cycle,period for 60min.each along X,Y,Z axes							
Safety & EMC	Safety standards	UL8750 (US)							
	Withstand voltage	I/P-O/P:1.80VAC (US)							
	Isolation resistance	I/P-O/P:100MΩ / 500VDC / 25°C / 70%RH							
	EMC Emission	FCC Part 15B (US)							
Others	Net Weight	0.115Kg							
	Dimension	159.5*43*20mm(L*W*H)							
	Packing	340*250*135 50PCS/CTN 6.52KG/CTN							
Notes	1. All parameters NOT specially mentioned are measured at 120VAC input, rated load and 25°Cof ambient temperature. 2. Tolerance: includes set us tolerance, line regulation and load regulation.								

Efficiency Curve (efficiency vs output load)

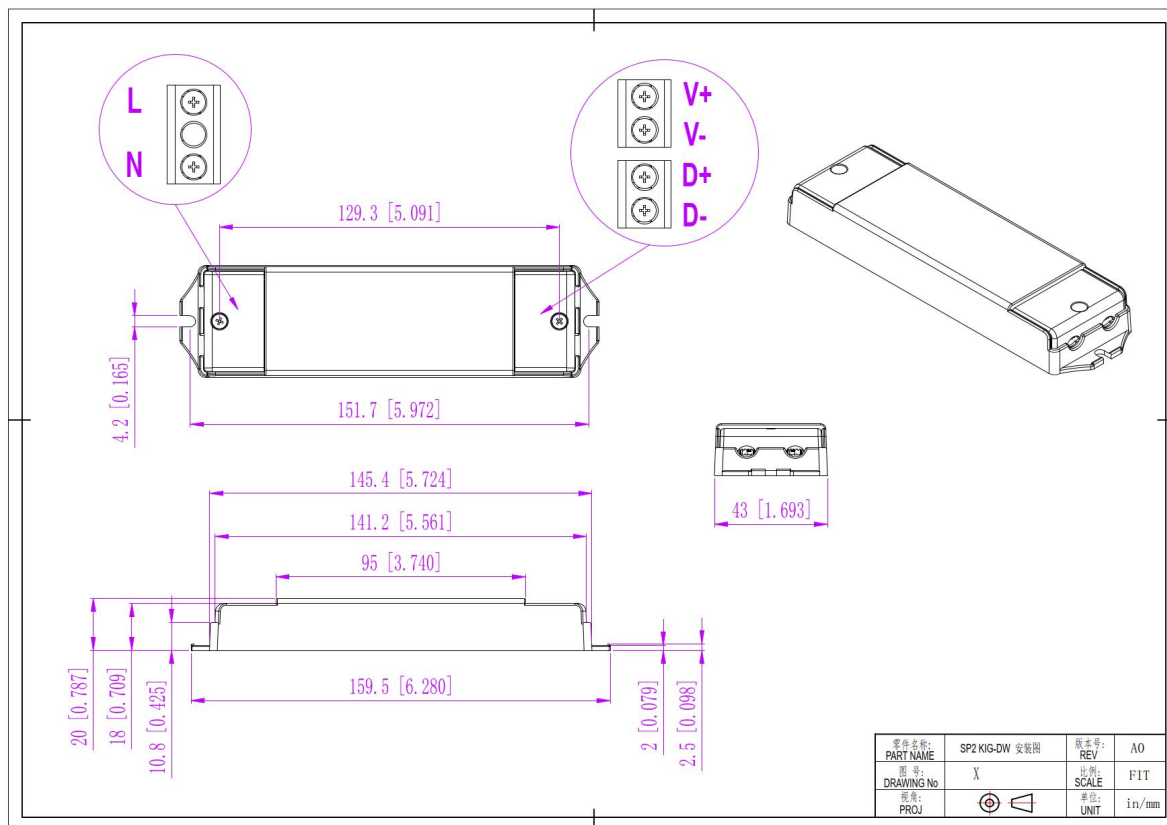


Derating Curve (output load vs TEMP.)



1. To extend their life, please refer to the Derating Curve and derate according to the temperature.
2. Please note that the rise in temperature of LED fixtures over a long period of time will cause their power to rise. Therefore, we recommend the power supply to reserve a certain amount of load to avoid overloading.

Mechanical Specification



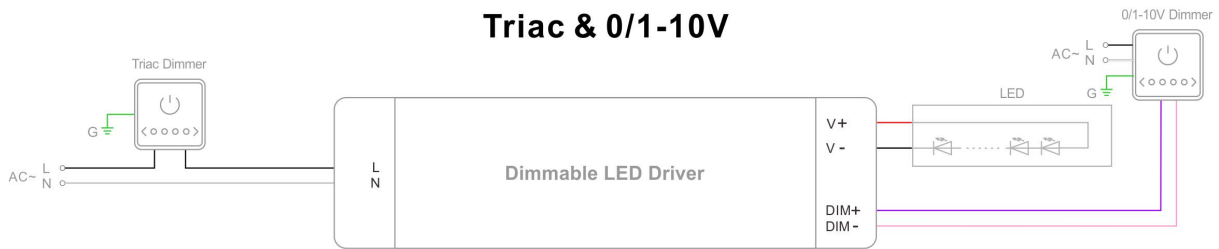
1. Input with DG126 terminals 3P: Live Wire AC (L), Neutral Wire AC(N).
2. Output LED SEC with DG126 terminals 2P: output Positive (LED+), output negative (LED-). Connected to LED Lamps.
3. Dimming DG126 terminals 2P: DIM (+) to 0/1-10V dimmer signal(+), DIM (-) to 0/1-10V dimmer signal (-).
4. Please make sure you connect these correctly otherwise your product will not function correctly and could be damaged.

Warm tips:

1. Suggested wire diameter: Input 0.75-2mm²; Output:0.5-2mm².
2. Any other requests for, we can customized.

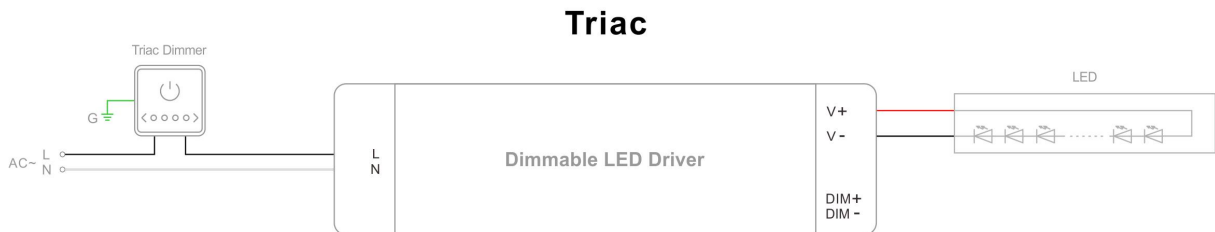
Dimming Operation and Connecting Diagram

- **Using two ways of dimming at the same time**, you must be assured that LED lighting is up to the max. Brightness then you could operate with the other dimming;

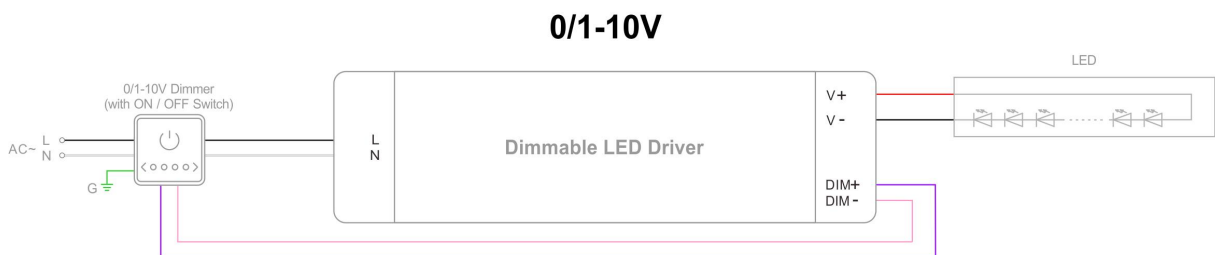


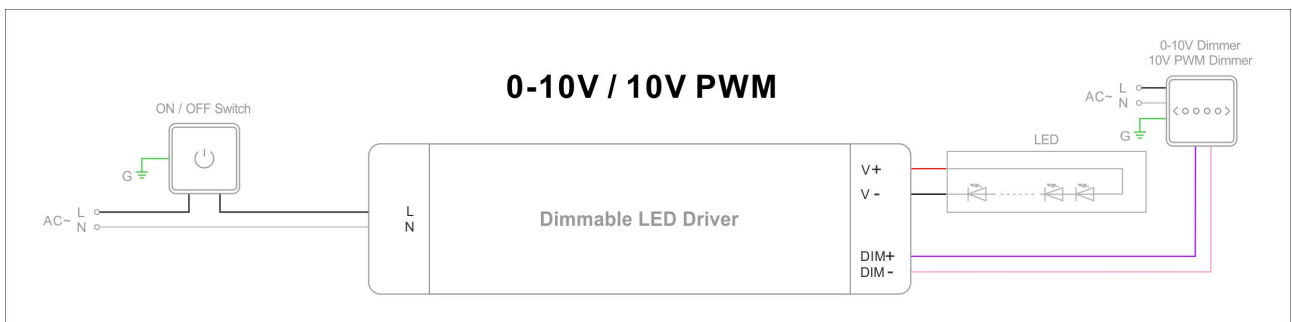
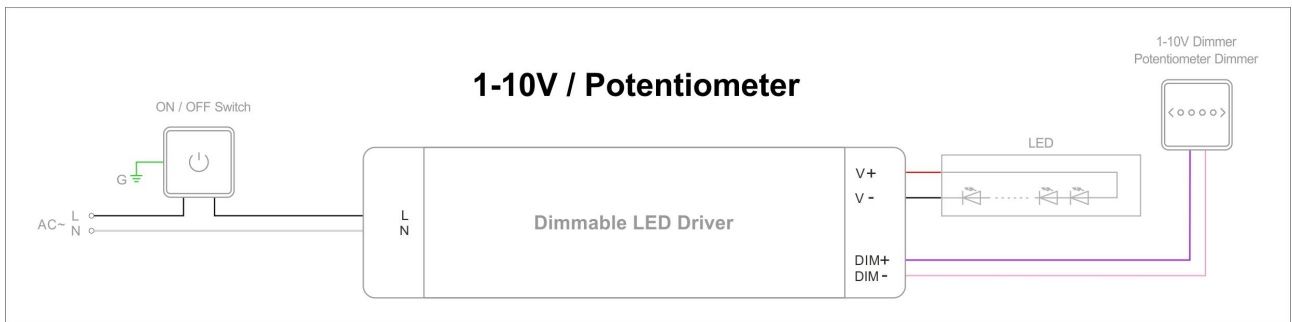
- **Using one dimming ---TRIAC/Phase cut dimming**

1. The Pulse-Width Modulation (PWM) of output voltage can be adjusted through input terminal of the AC phase line(L) by connection a phase /Triac dimmer or lighting system.
2. Working with forward phase, MLV and Reverse phase, ELV, TRIAC dimmers or light system.
3. Min. loading is about 10%
4. Please try to use dimmers with power at least 2 times as the output power of the driver.



- **Using one dimming ---0-10/ 1-10V/ 10V PWM/ Potentiometer dimming**





Instructions

1. This driver should be installed by qualified and professional person.
2. Please make sure the driver is installed with adequate ventilation around it to allow for heat dissipation.
3. Ensure that wiring is correct before test in order to avoid light and power supply damage.
4. If driver Cannot work normally, don't maintain privately.

KIG-DW Series 40W

Whole Family: KIG-XXX-DW - [10W 20W 40W 60W]



Class P SELV



RoHS



Features

Output:	Constant Current
NFC function:	Adjust output current by NFC
Range:	100-277VAC
PFC design:	Built-in active PFC function
Efficiency:	Up to 83%
Protections:	Short circuit/ over temperature
Heat dissipation:	Cooling by free air convection
Waterproof performance:	Full protection plastic housing, for dry, damp, locations
Dimming function:	<u>Phase dimming</u> : work with Forward phase, MLV and Reverse phase, ELV, TRIAC dimmers <u>0-10V dimming</u> : 0-10V/1-10V/Potentiometer/10V PWM 4 in 1
Dimming range:	1-100%
Application:	Suitable for the application of indoor LED lighting
Warranty:	5 years warranty

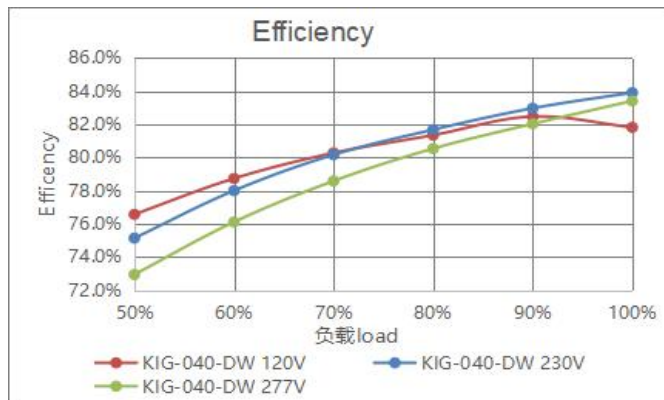
Triac/0-10V/1-10V/Potentiometer/10V PWM 5 in 1 Dimmable LED driver 40W

Specification

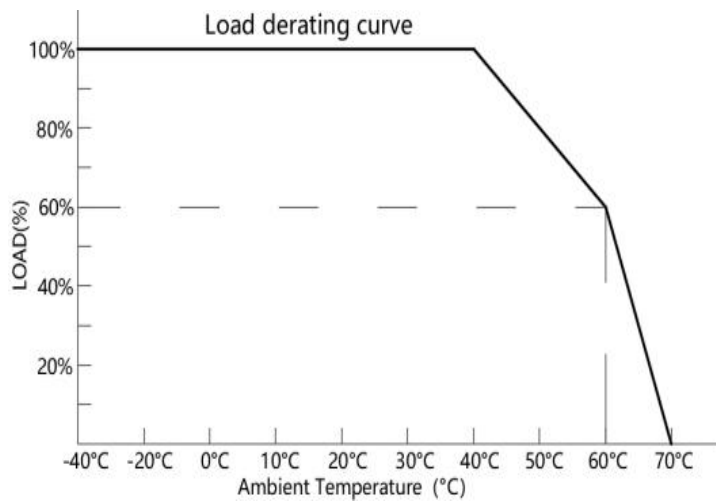
T ON ↓ OFF

Model		KIG-040-DW																
Output	Rated current (A)	0.3	0.35	0.4	0.45	0.5	0.55	0.6	0.65	0.7	0.8	0.9	1.0	1.1	1.2	1.3	1.4	
	DIP Code	⬇⬇⬇⬇		⬇T⬇⬇		⬇⬇T⬇		⬇TT⬇		⬇⬇⬇T		⬇T⬇T		⬇⬇TT		⬇TTT		
	DIP Code		T⬇⬇⬇		TT⬇⬇		T⬇TT		TTT⬇		T⬇TT		TT⬇T		T⬇TT		TTTT	
	Current Tolerance	±5%																
	No-Load Voltage	75V max.																
	DC Voltage (V)	3-65V								3-62	3-57	3-50	3-45	3-40	3-37	3-34	3-31	3-29
	Rated power (W)	19.5	22.8	26	29.3	32.5	35.8	39	40									
Input	Rated Voltage	100-277VAC																
	Rated Frequency	47-63HZ																
	Power Factor	0.95@120VAC 60Hz								0.90@277VAC 60Hz								
	THD@ full load	≤20%																
	Efficiency (Typ.)	≥80%@230VAC																
	AC Current (Max.)	0.52A@100VAC																
	Inrush Current (Typ.)	3.12A,36us@50%Ipeak @120VAC 21.2A,13.8us@50%Ipeak @230VAC 9.2A,34us@50%Ipeak @277VAC																
	Leakage current	<0.50mA																
Protection	Short Circuit	Constant current mode, recovers automatically after fault condition is removed																
	Over temperature	Ambient temp. over 50°C±5°C, output current will be reduced to 50%; Ambient temp. over 60°C±5°C, output will be off; recovers automatically after temp. drops.																
Environment	Working TEMP.	-40-+60°C																
	Working Humidity	20-90%RH, non-condensing																
	Storage TEMP. Humidity	-40-+80°C, 10-95%RH																
	TEMP. coefficient	±0.03%/°C (0-50°C)																
	Vibration	10-500Hz, 2G 10min./1 cycle, period for 60min. each along X, Y, Z axes																
Safety & EMC	Safety standards	UL8750																
	Withstand voltage	I/P-O/P:1.80VAC (US)																
	Isolation resistance	I/P-O/P:100MΩ / 500VDC / 25°C / 70%RH																
	EMC Emission	FCC Part 15B																
Others	Net Weight	0.225Kg																
	Dimension	171.5*54*20mm(L*W*H)																
	Packing	250*190*135mm				20PCS/CTN				5KG/CTN								
Notes	1. All parameters NOT specially mentioned are measured at 120VAC input, rated load and 25°C of ambient temperature. 2. Tolerance: includes set us tolerance, line regulation and load regulation.																	

Efficiency Curve (efficiency vs output load)

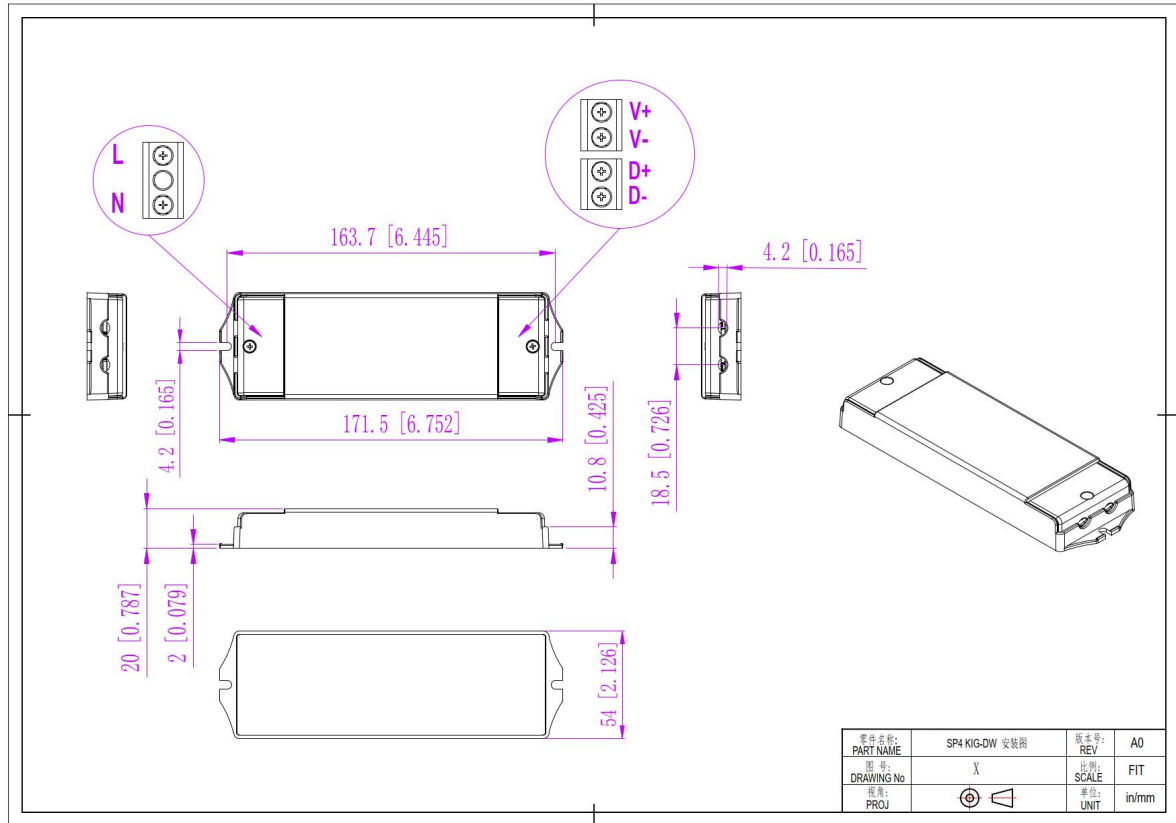


Derating Curve (output load vs TEMP.)



1. To extend their life, please refer to the Derating Curve and derate according to the temperature.
2. Please note that the rise in temperature of LED fixtures over a long period of time will cause their power to rise. Therefore, we recommend the power supply to reserve a certain amount of load to avoid overloading.

Mechanical Specification



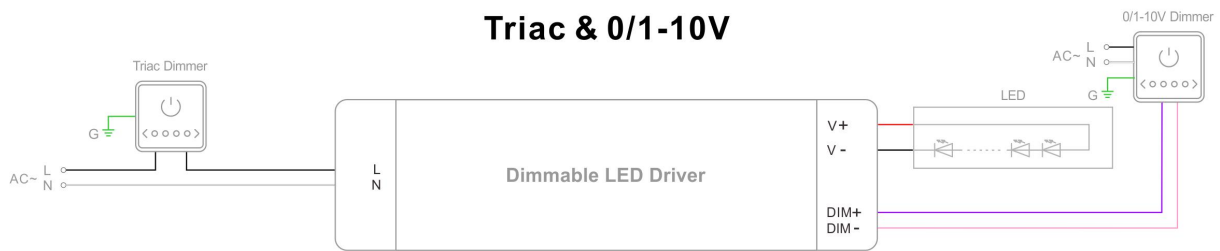
1. Input with DG126 terminals 3P: Live Wire AC (L), Neutral Wire AC(N).
2. Output LED SEC with DG126 terminals 2P: output Positive (LED+), output negative (LED-). Connected to LED Lamps.
3. Dimming DG126 terminals 2P: DIM (+) to 0/1-10V dimmer signal(+), DIM (-) to 0/1-10V dimmer signal (-).
4. Please make sure you connect these correctly otherwise your product will not function correctly and could be damaged.

Warm tips:

1. Suggested wire diameter: Input 0.75-2mm²; Output:0.5-2mm².
2. Any other requests for, we can customized.

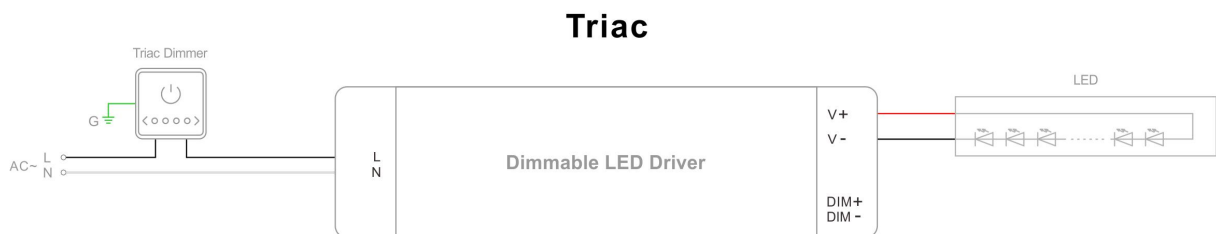
Dimming Operation and Connecting Diagram

- **Using two ways of dimming at the same time**, you must be assured that LED lighting is up to the max. Brightness then you could operate with the other dimming;

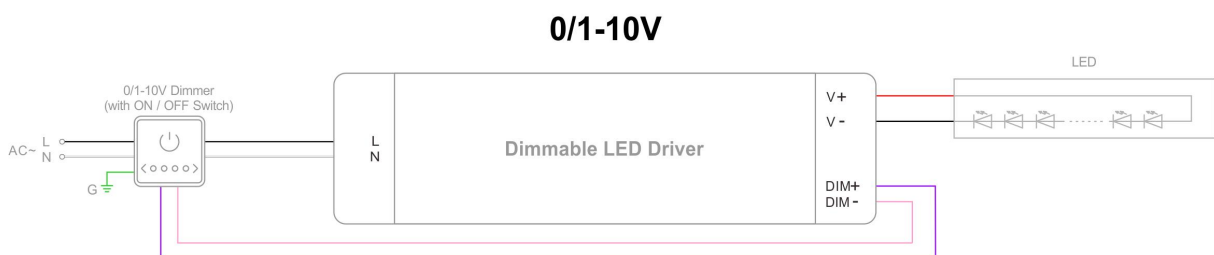


- **Using one dimming ---TRIAC/Phase cut dimming**

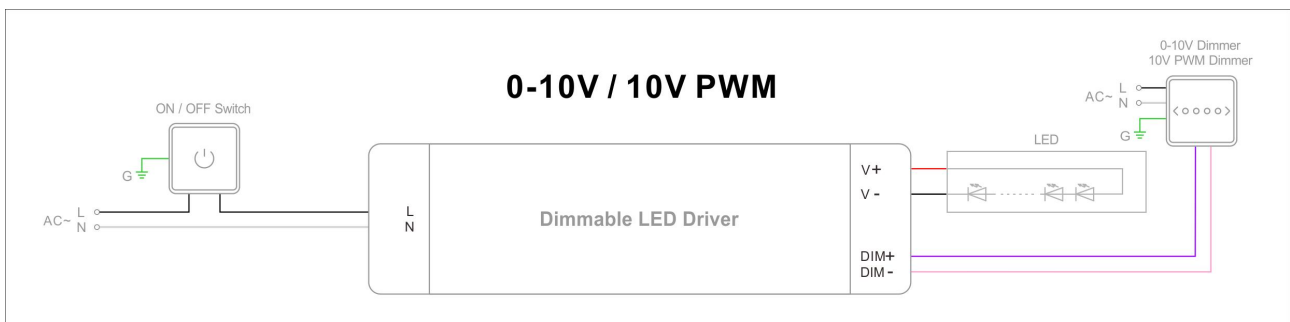
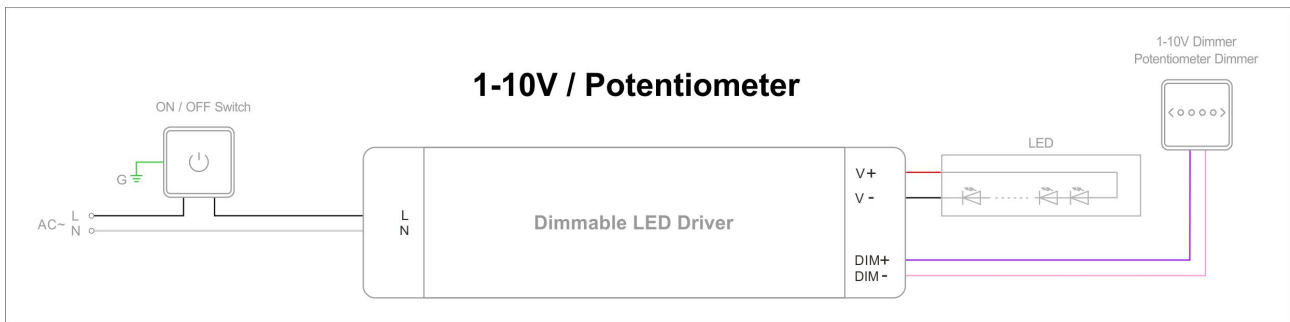
1. The Pulse-Width Modulation (PWM) of output voltage can be adjusted through input terminal of the AC phase line(L) by connection a phase /Triac dimmer or lighting system.
2. Working with forward phase, MLV and Reverse phase, ELV, TRIAC dimmers or light system.
3. Min. loading is about 10%
4. Please try to use dimmers with power at least 2 times as the output power of the driver.



- **Using one dimming ---0-10/ 1-10V/ 10V PWM/ Potentiometer dimming**



Triac/0-10V/1-10V/Potentiometer/10V PWM 5 in 1 Dimmable LED driver 40W



Instruction

1. This driver should be installed by qualified and professional person.
2. Please make sure the driver is installed with adequate ventilation around it to allow for heat dissipation.
3. Ensure that wiring is correct before test in order to avoid light and power supply damage.
4. If driver Cannot work normally, don't maintain privately.